

Calretinin antibody

Cat. No. GTX82731

| | |
|--------------|------------|
| Host | Sheep |
| Clonality | Polyclonal |
| Isotype | IgG |
| Applications | WB, IHC-Fr |
| Reactivity | Rat |

Package
100 µl

Applications

Application Note

Optimal working dilutions should be determined experimentally by the end user.

Calculated MW 31 kDa. ([Note](#))

Properties

| | |
|---------------|--|
| Form | Liquid |
| Buffer | 10mM Tris, 100mM NaCl |
| Preservative | No preservatives |
| Storage | Store as concentrated solution. Centrifuge briefly prior to opening vial. For short-term storage (1-2 weeks), store at 4°C. For long-term storage, aliquot and store at -20°C or below. Avoid multiple freeze-thaw cycles. |
| Concentration | Batch dependent (Please refer to the vial label for the specific concentration.) |
| Immunogen | Purified guinea pig calretinin |
| Purification | Protein A purified |
| Conjugation | Unconjugated |

Note

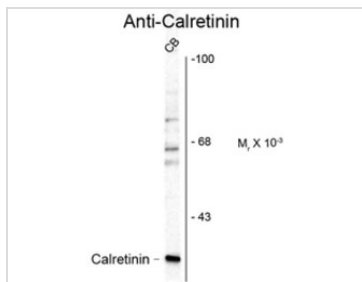
For laboratory research use only. Not for any clinical, therapeutic, or diagnostic use in humans or animals. Not for animal or human consumption.

Purchasers shall not, and agree not to enable third parties to, analyze, copy, reverse engineer or otherwise attempt to determine the structure or sequence of the product.



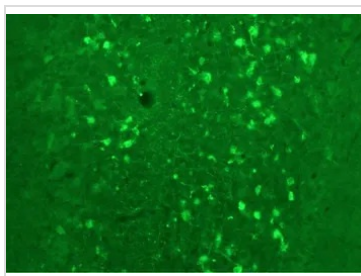
For full product information, images and publications, please visit our [website](#).

DATA IMAGES



GTX82731 WB Image

Western blot of rat cerebellum (CB) lysate showing specific immunolabeling of the ~29k calretinin protein using Calretinin antibody (GTX82731).



GTX82731 IHC-Fr Image

IHC-Fr analysis of rat cerebellum using GTX82731.



For full product information, images and publications, please visit our [website](#).