

alpha Internexin antibody

Cat. No. GTX82742

Host	Chicken
Clonality	Polyclonal
Isotype	IgY
Applications	WB, ICC/IF, IHC
Reactivity	Human, Mouse, Rat

Package
100 µl

Applications

Application Note

Optimal working dilutions should be determined experimentally by the end user.

Properties

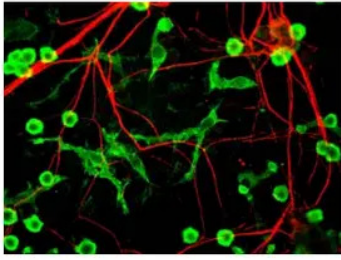
Form	Liquid
Preservative	10mM Sodium azide
Storage	Store as concentrated solution. Centrifuge briefly prior to opening vial. For short-term storage (1-2 weeks), store at 4°C. For long-term storage, aliquot and store at -20°C or below. Avoid multiple freeze-thaw cycles.
Concentration	Batch dependent (Please refer to the vial label for the specific concentration.)
Immunogen	Recombinant rat alpha-internexin expressed in and purified from E. coli
Purification	Total IgY fraction
Conjugation	Unconjugated
Note	For laboratory research use only. Not for any clinical, therapeutic, or diagnostic use in humans or animals. Not for animal or human consumption. Purchasers shall not, and agree not to enable third parties to, analyze, copy, reverse engineer or otherwise attempt to determine the structure or sequence of the product.



For full product information, images and publications, please visit our [website](#).

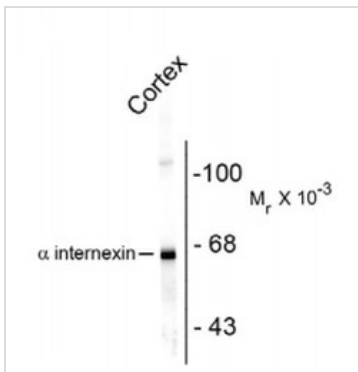
DATA IMAGES

Anti-alpha Internexin



GTX82742 ICC/IF Image

Immunostaining of cultured neurons and glia showing specific labeling of neuronal processes (red) using our alpha-internexin antibody (GTX82742) and microglia (green) with coronin 1a antibody.



GTX82742 WB Image

Western blot of rat cortex lysate showing specific immunolabeling of the ~66k alpha internexin protein using Alpha Internexin/ NF-66 antibody (GTX82742).



For full product information, images and publications, please visit our [website](https://www.genetex.com).