

STAT3 antibody [3B5]

Cat. No. GTX82752

Host	Mouse
Clonality	Monoclonal
Isotype	IgG1
Applications	WB, ICC/IF, IHC-P, ELISA
Reactivity	Human, Mouse, Rat, Monkey

Package
100 µl

Applications

Application Note

*Optimal dilutions/concentrations should be determined by the researcher.

Suggested dilution	Recommended dilution
WB	1/500 - 1/2000
ICC/IF	1/200 - 1/1000
IHC-P	1/200 - 1/1000
ELISA	1/10000

Not tested in other applications.

Calculated MW 88 kDa. ([Note](#))

Properties

Form	Liquid
Buffer	Ascites
Preservative	0.03% Sodium azide
Storage	Store as concentrated solution. Centrifuge briefly prior to opening vial. For short-term storage (1-2 weeks), store at 4°C. For long-term storage, aliquot and store at -20°C or below. Avoid multiple freeze-thaw cycles.
Immunogen	Purified recombinant fragment of human STAT3 expressed in E. Coli.
Purification	Unpurified
Conjugation	Unconjugated

Note

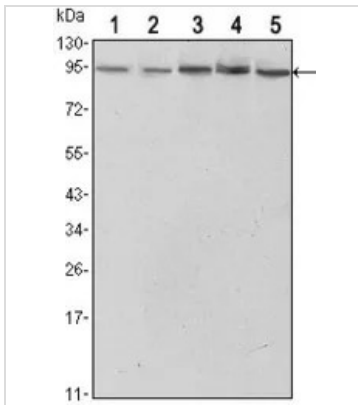
For laboratory research use only. Not for any clinical, therapeutic, or diagnostic use in humans or animals. Not for animal or human consumption.

Purchasers shall not, and agree not to enable third parties to, analyze, copy, reverse engineer or otherwise attempt to determine the structure or sequence of the product.



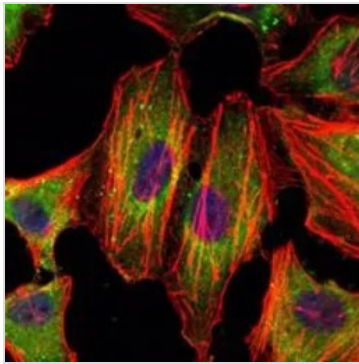
For full product information, images and publications, please visit our [website](#).

DATA IMAGES



GTx82752 WB Image

WB analysis of HeLa (1), NIH3T3 (2), Jurkat (3), PC-12 (4) and COS7 (5) cell lysate using GTx82752 STAT3 antibody [3B5].



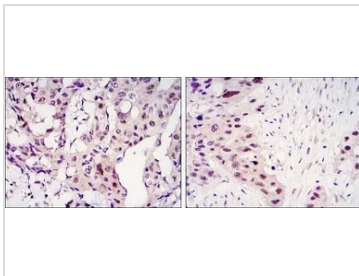
GTx82752 ICC/IF Image

ICC/IF analysis of HeLa cells using GTx82752 STAT3 antibody [3B5].

Green : STAT3

Blue: DRAQ5 fluorescent DNA dye

Red: Actin filaments



GTx82752 IHC-P Image

IHC-P analysis of mammary cancer tissue (left) and lung cancer tissue (right) using GTx82752 STAT3 antibody [3B5].



For full product information, images and publications, please visit our [website](https://www.genetex.com).