

# Oct4 antibody [7E7]

**Cat. No. GTX82755**

<b>Host</b>	Mouse
<b>Clonality</b>	Monoclonal
<b>Isotype</b>	IgG1
<b>Application</b>	WB, ICC/IF, FACS, ELISA
<b>Reactivity</b>	Human

**Package**  
100 µl

## APPLICATION

### Application Note

\*Optimal dilutions/concentrations should be determined by the researcher.

Suggested dilution	Recommended dilution
WB	1/500 - 1/2000
ICC/IF	1/200 - 1/1000
FACS	1/200 - 1/400
ELISA	1/10000

Not tested in other applications.

**Calculated MW** 39 kDa. ( [Note](#) )

## PROPERTIES

<b>Form</b>	Liquid
<b>Buffer</b>	Ascites
<b>Preservative</b>	0.03% Sodium azide
<b>Storage</b>	Store as concentrated solution. Centrifuge briefly prior to opening vial. For short-term storage (1-2 weeks), store at 4°C. For long-term storage, aliquot and store at -20°C or below. Avoid multiple freeze-thaw cycles.
<b>Immunogen</b>	Synthesized peptide derived from internal of human Oct4.
<b>Purification</b>	Unpurified
<b>Conjugation</b>	Unconjugated

### Note

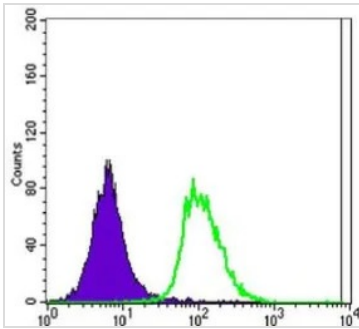
For laboratory research use only. Not for any clinical, therapeutic, or diagnostic use in humans or animals. Not for animal or human consumption.

Purchasers shall not, and agree not to enable third parties to, analyze, copy, reverse engineer or otherwise attempt to determine the structure or sequence of the product.



For full product information, images and publications, please visit our [website](#).

## DATA IMAGES

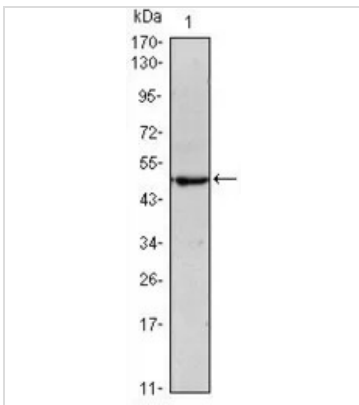


### GTx82755 FACS Image

FACS analysis of Jurkat cells using GTx82755 Oct4 antibody [7E7].

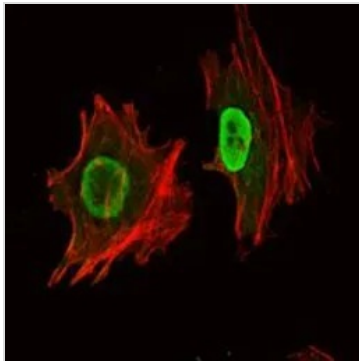
Green : Oct4

Purple : negative control



### GTx82755 WB Image

WB analysis of NTERA-2 cell lysate using GTx82755 Oct4 antibody [7E7].



### GTx82755 ICC/IF Image

ICC/IF analysis of NTERA-2 cells using GTx82755 Oct4 antibody [7E7].

Green : Oct4

Red: Actin filaments



For full product information, images and publications, please visit our [website](https://www.genetex.com).