

KLHL1 antibody [3A8]

Cat. No. GTX82766

| | |
|--------------|-------------------|
| Host | Mouse |
| Clonality | Monoclonal |
| Isotype | IgG1 |
| Applications | WB, ICC/IF, ELISA |
| Reactivity | Human, Mouse |

Package
100 µl

Applications

Application Note

*Optimal dilutions/concentrations should be determined by the researcher.

| Suggested dilution | Recommended dilution |
|--------------------|----------------------|
| WB | 1/500 - 1/2000 |
| ICC/IF | 1/200 - 1/1000 |
| ELISA | 1/10000 |

Not tested in other applications.

Calculated MW 83 kDa. ([Note](#))

Properties

| | |
|--------------|--|
| Form | Liquid |
| Buffer | Ascites |
| Preservative | 0.03% Sodium azide |
| Storage | Store as concentrated solution. Centrifuge briefly prior to opening vial. For short-term storage (1-2 weeks), store at 4°C. For long-term storage, aliquot and store at -20°C or below. Avoid multiple freeze-thaw cycles. |
| Immunogen | Purified recombinant fragment of human KLHL1 expressed in E. Coli. |
| Purification | Unpurified |
| Conjugation | Unconjugated |

Note

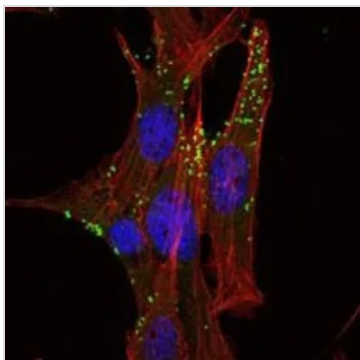
For laboratory research use only. Not for any clinical, therapeutic, or diagnostic use in humans or animals. Not for animal or human consumption.

Purchasers shall not, and agree not to enable third parties to, analyze, copy, reverse engineer or otherwise attempt to determine the structure or sequence of the product.



For full product information, images and publications, please visit our [website](#).

DATA IMAGES

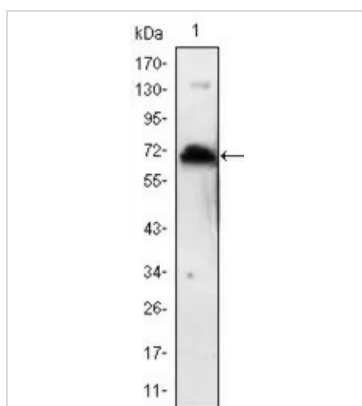


GTX82766 ICC/IF Image

ICC/IF analysis of NIH3T3 cells using GTX82766 KLHL1 antibody [3A8].

Green : KLHL1

Red: Actin filaments



GTX82766 WB Image

WB analysis of human KLHL1 (AA: 202-506) recombinant protein using GTX82766 KLHL1 antibody [3A8].



For full product information, images and publications, please visit our [website](#).