

KLF4 antibody [1E6]

Cat. No. GTX82771

Host	Mouse
Clonality	Monoclonal
Isotype	IgG1
Application	WB, ICC/IF, IHC-P, ELISA
Reactivity	Human

Package
100 µl

APPLICATION

Application Note

*Optimal dilutions/concentrations should be determined by the researcher.

Suggested dilution	Recommended dilution
WB	1/500 - 1/2000
ICC/IF	1/200 - 1/1000
IHC-P	1/200 - 1/1000
ELISA	1/10000

Not tested in other applications.

Calculated MW 55 kDa. ([Note](#))

PROPERTIES

Form	Liquid
Buffer	Ascites
Preservative	0.03% Sodium azide
Storage	Store as concentrated solution. Centrifuge briefly prior to opening vial. For short-term storage (1-2 weeks), store at 4°C. For long-term storage, aliquot and store at -20°C or below. Avoid multiple freeze-thaw cycles.
Immunogen	Purified recombinant fragment of human KLF4 expressed in E. Coli.
Purification	Unpurified
Conjugation	Unconjugated

Note

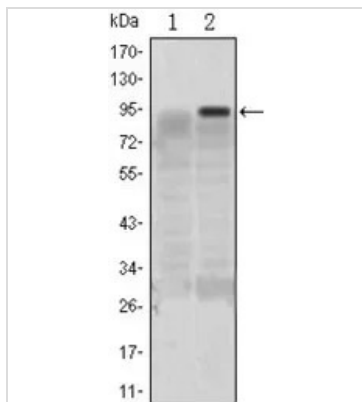
For laboratory research use only. Not for any clinical, therapeutic, or diagnostic use in humans or animals. Not for animal or human consumption.

Purchasers shall not, and agree not to enable third parties to, analyze, copy, reverse engineer or otherwise attempt to determine the structure or sequence of the product.



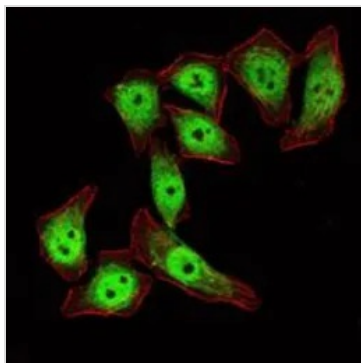
For full product information, images and publications, please visit our [website](#).

DATA IMAGES



GTx82771 WB Image

WB analysis of HEK293 (1) and KLF4(AA: 2-180)-hlgGfC transfected HEK293 (2) cell lysate using GTx82771 KLF4 antibody [1E6].

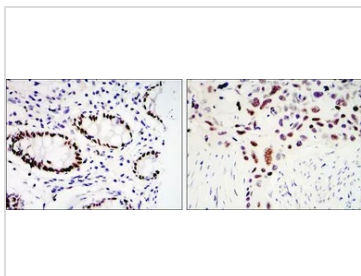


GTx82771 ICC/IF Image

ICC/IF analysis of ECA109 cells using GTx82771 KLF4 antibody [1E6].

Green : KLF4

Red: Actin filaments



GTx82771 IHC-P Image

IHC-P analysis of colon cancer tissue (left) and lung cancer tissue (right) using GTx82771 KLF4 antibody [1E6].



For full product information, images and publications, please visit our [website](https://www.genetex.com).