

## Ki67 antibody [8D5]

Cat. No. GTX82777

Host	Mouse
Clonality	Monoclonal
Isotype	IgG1
Applications	WB, ICC/IF, IHC-P, IHC-Fr, ELISA
Reactivity	Human, Mouse, Rat, Rabbit

References ( 6 )

Package

100 µl

## Applications

## Application Note

\*Optimal dilutions/concentrations should be determined by the researcher.

Suggested dilution	Recommended dilution
WB	1/500 - 1/2000
ICC/IF	Assay dependent
IHC-P	1/200 - 1/1000
IHC-Fr	Assay dependent
ELISA	1/10000

Not tested in other applications.

Calculated MW 359 kDa. ( [Note](#) )

## Properties

Form	Liquid
Buffer	Ascites
Preservative	0.03% Sodium azide
Storage	Store as concentrated solution. Centrifuge briefly prior to opening vial. For short-term storage (1-2 weeks), store at 4°C. For long-term storage, aliquot and store at -20°C or below. Avoid multiple freeze-thaw cycles.
Immunogen	Synthetic peptide corresponding to aa (CEDLAGFKELFQTPG) of human Ki67, conjugated to KLH.
Purification	Unpurified
Conjugation	Unconjugated

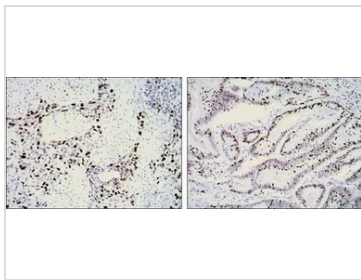
## Note

For laboratory research use only. Not for any clinical, therapeutic, or diagnostic use in humans or animals. Not for animal or human consumption.

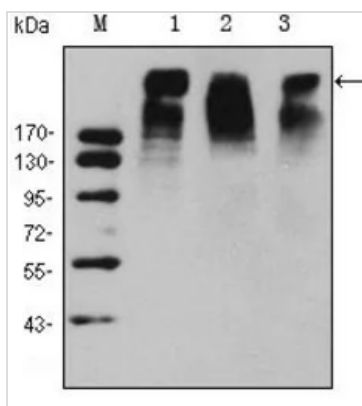
Purchasers shall not, and agree not to enable third parties to, analyze, copy, reverse engineer or otherwise attempt to determine the structure or sequence of the product.



For full product information, images and publications, please visit our [website](#).

**DATA IMAGES**

**GTX82777 IHC-P Image**

IHC-P analysis of lung cancer (left) and rectal cancer (right) using GTX82777 Ki67 antibody [8D5].


**GTX82777 WB Image**

WB analysis of HeLa (1), MCF-7 (2) and Raji (3) cell lysate using GTX82777 Ki67 antibody [8D5].



For full product information, images and publications, please visit our [website](https://www.genetex.com).