

## Hexokinase II antibody [3D3]

Cat. No. GTX82791

Host	Mouse
Clonality	Monoclonal
Isotype	IgG1
Applications	WB, IHC-P, FCM, ELISA
Reactivity	Human

Package  
100 µl

## Applications

## Application Note

\*Optimal dilutions/concentrations should be determined by the researcher.

Suggested dilution	Recommended dilution
WB	1/500 - 1/2000
IHC-P	1/200 - 1/1000
FCM	1/200 - 1/400
ELISA	1/10000

Not tested in other applications.

Calculated MW 102 kDa. ([Note](#))

## Properties

Form	Liquid
Buffer	Ascites
Preservative	0.03% Sodium azide
Storage	Store as concentrated solution. Centrifuge briefly prior to opening vial. For short-term storage (1-2 weeks), store at 4°C. For long-term storage, aliquot and store at -20°C or below. Avoid multiple freeze-thaw cycles.
Immunogen	Purified recombinant fragment of human HK2 expressed in E. Coli.
Purification	Unpurified
Conjugation	Unconjugated

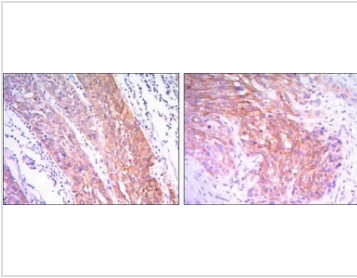
## Note

For laboratory research use only. Not for any clinical, therapeutic, or diagnostic use in humans or animals. Not for animal or human consumption.

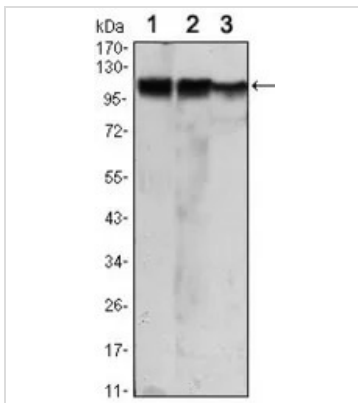
Purchasers shall not, and agree not to enable third parties to, analyze, copy, reverse engineer or otherwise attempt to determine the structure or sequence of the product.



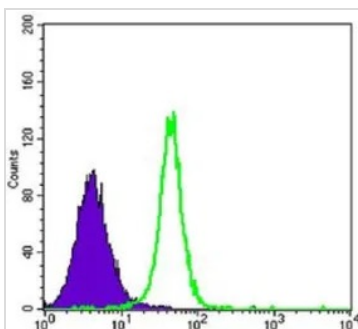
For full product information, images and publications, please visit our [website](#).

**DATA IMAGES**

**GTX82791 IHC-P Image**

IHC-P analysis of esophagus cancer tissue (left) and human lung cancer (right) using GTX82791 Hexokinase II antibody [3D3].


**GTX82791 WB Image**

WB analysis of Jurkat (1), HeLa (2) and HEK293 (3) cell lysate using GTX82791 Hexokinase II antibody [3D3].


**GTX82791 FCM Image**

FACS analysis of K562 cells using GTX82791 Hexokinase II antibody [3D3].

Green : Hexokinase II

Purple : negative control



For full product information, images and publications, please visit our [website](#).