

Bcl-2 antibody [8E12]

Cat. No. GTX82803

Host	Mouse
Clonality	Monoclonal
Isotype	IgG1
Application	ICC/IF, IHC-P, FACS, ELISA
Reactivity	Human, Mouse

Package
100 µl

APPLICATION

Application Note

*Optimal dilutions/concentrations should be determined by the researcher.

Suggested dilution	Recommended dilution
ICC/IF	1/200 - 1/1000
IHC-P	1/200 - 1/1000
FACS	1/200 - 1/400
ELISA	1/10000

Not tested in other applications.

Calculated MW 26 kDa. ([Note](#))

PROPERTIES

Form	Liquid
Buffer	Ascites
Preservative	0.03% Sodium azide
Storage	Store as concentrated solution. Centrifuge briefly prior to opening vial. For short-term storage (1-2 weeks), store at 4°C. For long-term storage, aliquot and store at -20°C or below. Avoid multiple freeze-thaw cycles.
Immunogen	Synthetic peptide corresponding to residues surrounding BCL-2, conjugated to KLH.
Purification	Unpurified
Conjugation	Unconjugated

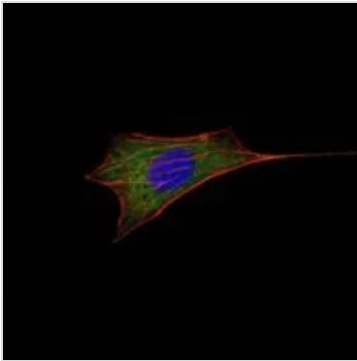
Note

For laboratory research use only. Not for any clinical, therapeutic, or diagnostic use in humans or animals. Not for animal or human consumption.

Purchasers shall not, and agree not to enable third parties to, analyze, copy, reverse engineer or otherwise attempt to determine the structure or sequence of the product.



For full product information, images and publications, please visit our [website](#).

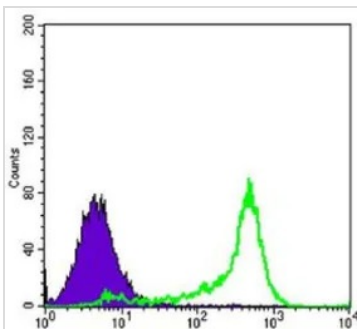
DATA IMAGES

GTx82803 ICC/IF Image

ICC/IF analysis of NIH3T3 cells using GTx82803 Bcl-2 antibody [8E12].

Green : Bcl-2

Blue: DRAQ5 fluorescent DNA dye

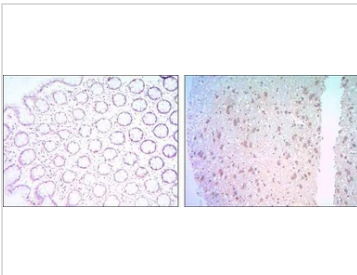
Red: Actin filaments


GTx82803 FACS Image

FACS analysis of 3T3L1 cells using GTx82803 Bcl-2 antibody [8E12].

Green : Bcl-2

Purple : negative control


GTx82803 IHC-P Image

IHC-P analysis of colon cancer tissue (left) and human brain tissue (right) using GTx82803 Bcl-2 antibody [8E12].



For full product information, images and publications, please visit our [website](#).