

KLHL11 antibody [1B9A8]

Cat. No. GTX82812

Host	Mouse
Clonality	Monoclonal
Isotype	IgG1
Applications	WB, ICC/IF, FCM, ELISA
Reactivity	Human, Mouse

Package
100 µl

Applications

Application Note

*Optimal dilutions/concentrations should be determined by the researcher.

Suggested dilution	Recommended dilution
WB	1/500 - 1/2000
ICC/IF	1/200 - 1/1000
FCM	1/200 - 1/400
ELISA	1/10000

Not tested in other applications.

Calculated MW 80 kDa. ([Note](#))

Properties

Form	Liquid
Buffer	Ascites
Preservative	0.03% Sodium azide
Storage	Store as concentrated solution. Centrifuge briefly prior to opening vial. For short-term storage (1-2 weeks), store at 4°C. For long-term storage, aliquot and store at -20°C or below. Avoid multiple freeze-thaw cycles.
Immunogen	Purified recombinant fragment of human KLHL11 expressed in E. Coli.
Purification	Unpurified
Conjugation	Unconjugated

Note

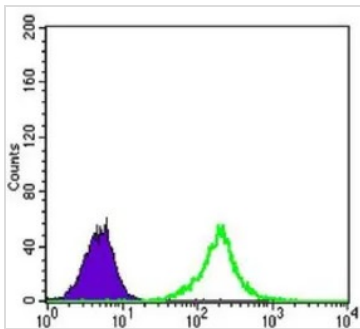
For laboratory research use only. Not for any clinical, therapeutic, or diagnostic use in humans or animals. Not for animal or human consumption.

Purchasers shall not, and agree not to enable third parties to, analyze, copy, reverse engineer or otherwise attempt to determine the structure or sequence of the product.



For full product information, images and publications, please visit our [website](#).

DATA IMAGES

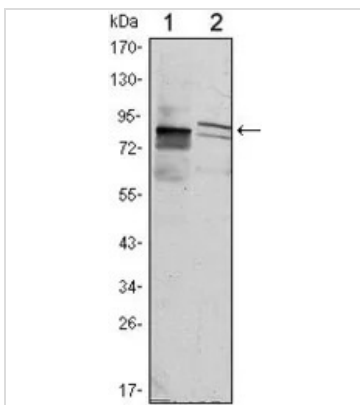


GTx82812 FCM Image

FACS analysis of K562 cells using GTx82812 KLHL11 antibody [1B9A8].

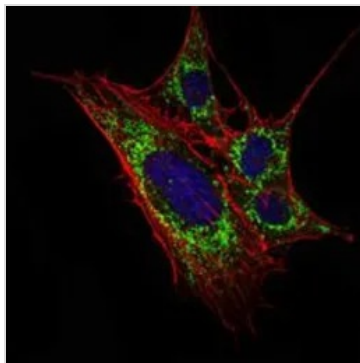
Green : KLHL11

Purple : negative control



GTx82812 WB Image

WB analysis of HeLa (1) and MCF-7 (2) cell lysate using GTx82812 KLHL11 antibody [1B9A8].



GTx82812 ICC/IF Image

ICC/IF analysis of 3T3-L1 cells using GTx82812 KLHL11 antibody [1B9A8].

Green : KLHL11

Blue: DRAQ5 fluorescent DNA dye

Red: Actin filaments



For full product information, images and publications, please visit our [website](https://www.genetex.com).