

## SMC1 antibody [5B6]

Cat. No. GTX82813

Host	Mouse
Clonality	Monoclonal
Isotype	IgG1
Applications	WB, ICC/IF, IHC-P, FCM, ELISA
Reactivity	Human, Mouse

References ( 2 )

Package

100 µl

## Applications

## Application Note

\*Optimal dilutions/concentrations should be determined by the researcher.

Suggested dilution	Recommended dilution
WB	1/500 - 1/2000
ICC/IF	1/200 - 1/1000
IHC-P	1/200 - 1/1000
FCM	1/200 - 1/400
ELISA	1/10000

Not tested in other applications.

Calculated MW 143 kDa. ( [Note](#) )

## Properties

Form	Liquid
Buffer	PBS
Preservative	0.05% Sodium azide
Storage	Store as concentrated solution. Centrifuge briefly prior to opening vial. For short-term storage (1-2 weeks), store at 4°C. For long-term storage, aliquot and store at -20°C or below. Avoid multiple freeze-thaw cycles.
Concentration	Batch dependent (Please refer to the vial label for the specific concentration.)
Immunogen	Purified recombinant fragment of human SMC1 expressed in E. Coli.
Purification	Protein G Purified
Conjugation	Unconjugated



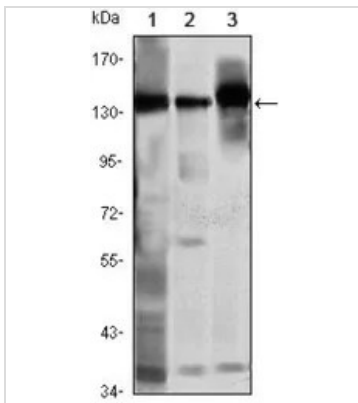
For full product information, images and publications, please visit our [website](#).

For laboratory research use only. Not for any clinical, therapeutic, or diagnostic use in humans or animals. Not for animal or human consumption.

## Note

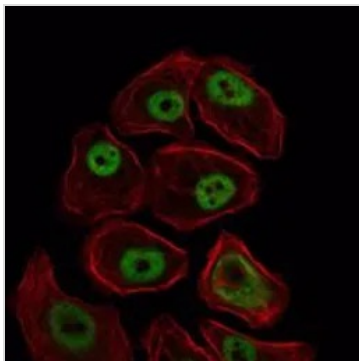
Purchasers shall not, and agree not to enable third parties to, analyze, copy, reverse engineer or otherwise attempt to determine the structure or sequence of the product.

## DATA IMAGES



### GTx82813 WB Image

WB analysis of K562 (1), Jurkat (2) and A549 (3) cell lysate using GTx82813 SMC1 antibody [5B6].

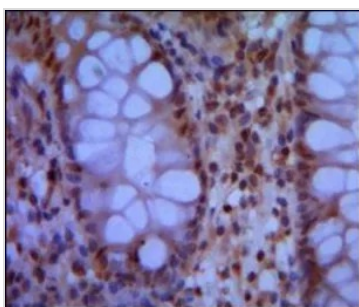


### GTx82813 ICC/IF Image

ICC/IF analysis of NIH3T3 cells using GTx82813 SMC1 antibody [5B6].

Green : SMC1

Red: Actin filaments



### GTx82813 IHC-P Image

IHC-P analysis of human colon using GTx82813 SMC1 antibody [5B6].



For full product information, images and publications, please visit our [website](https://www.genetex.com).