

SAP97 antibody

Cat. No. GTX82842

Host	Rabbit
Clonality	Polyclonal
Isotype	IgG
Applications	WB, ICC/IF
Reactivity	Human, Rat

Package
100 µg

Applications

Application Note

*Optimal dilutions/concentrations should be determined by the researcher.

Suggested dilution	Recommended dilution
WB	2 µg/ml
ICC/IF	Assay dependent

Not tested in other applications.

Calculated MW 101 kDa. ([Note](#))

Product Note This antibody does not detect other synapse-associated protein family members.

Properties

Form	Liquid
Buffer	PBS, 0.1% BSA
Preservative	0.05% Sodium azide
Storage	Store as concentrated solution. Centrifuge briefly prior to opening vial. For short-term storage (1-2 weeks), store at 4°C. For long-term storage, aliquot and store at -20°C or below. Avoid multiple freeze-thaw cycles.
Concentration	1 mg/ml (Please refer to the vial label for the specific concentration.)
Immunogen	Synthetic peptide corresponding to residues E(16) E Y R S K L S Q T E D R Q L R S S(33) of human SAP97.
Purification	Purified by antigen-affinity chromatography
Conjugation	Unconjugated

Note

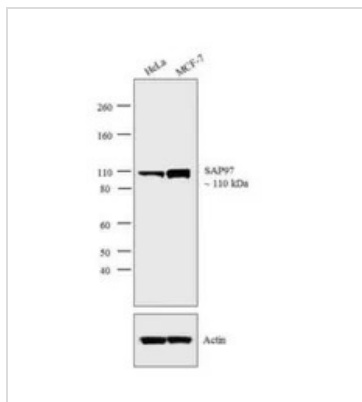
For laboratory research use only. Not for any clinical, therapeutic, or diagnostic use in humans or animals. Not for animal or human consumption.

Purchasers shall not, and agree not to enable third parties to, analyze, copy, reverse engineer or otherwise attempt to determine the structure or sequence of the product.



For full product information, images and publications, please visit our [website](#).

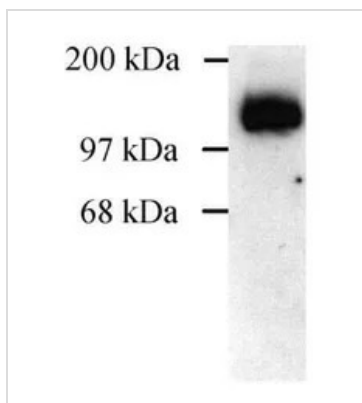
DATA IMAGES



GTX82842 WB Image

WB analysis of membrane extracts (30 µg/lane) of HeLa (Lane 1) and MCF-7 (Lane 2) using GTX82842 SAP97 antibody.

Dilution : 2 µg/ml



GTX82842 WB Image

WB analysis of COS cells transfected with rat SAP97 using GTX82842 SAP97 antibody.



For full product information, images and publications, please visit our [website](https://www.genetex.com).