

alpha 2a Adrenergic Receptor antibody

Cat. No. GTX82843

Host	Rabbit
Clonality	Polyclonal
Isotype	IgG
Applications	WB, ICC/IF, IHC-P, IHC-Fr, IHC
Reactivity	Human, Mouse, Rat

Package
100 µl

Applications

Application Note

*Optimal dilutions/concentrations should be determined by the researcher.

Suggested dilution	Recommended dilution
WB	1:500
ICC/IF	Assay dependent
IHC-P	1:1,000
IHC-Fr	Assay dependent
IHC	Assay dependent

Not tested in other applications.

Properties

Form	Liquid
Buffer	PBS, 0.1% BSA
Preservative	0.05% Sodium azide
Storage	Store as concentrated solution. Centrifuge briefly prior to opening vial. For short-term storage (1-2 weeks), store at 4°C. For long-term storage, aliquot and store at -20°C or below. Avoid multiple freeze-thaw cycles.
Concentration	0.6 mg/ml (Please refer to the vial label for the specific concentration.)
Immunogen	Synthetic peptide corresponding to residues R(218) I Y Q I A K R R T R V P P S R R G(235) of the 3rd intracellular loop of human A2AAR.
Purification	Purified by antigen-affinity chromatography
Conjugation	Unconjugated

Note

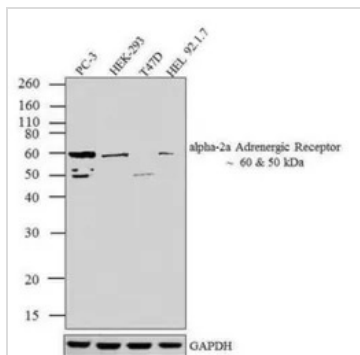
For laboratory research use only. Not for any clinical, therapeutic, or diagnostic use in humans or animals. Not for animal or human consumption.

Purchasers shall not, and agree not to enable third parties to, analyze, copy, reverse engineer or otherwise attempt to determine the structure or sequence of the product.



For full product information, images and publications, please visit our [website](#).

DATA IMAGES



GTX82843 WB Image

WB analysis of whole cell extracts (30 µg lysate) of PC-3 (Lane 1), HEK-293 (Lane 2), T47D (Lane 3), and HEL 92.1.7 (Lane 4) using GTX82843 alpha 2a Adrenergic Receptor antibody.

Dilution : 1:250-1:1000



For full product information, images and publications, please visit our [website](https://www.genetex.com).