

GAPDH antibody

Cat. No. GTX82899

Host	Rabbit
Clonality	Polyclonal
Isotype	IgG
Applications	WB
Reactivity	Human, Mouse, Rat, Zebrafish, Dog, Primate

References (3)

Package

100 µg

Applications

Application Note

*Optimal dilutions/concentrations should be determined by the researcher.

Suggested dilution	Recommended dilution
WB	1:1000-1:5000

Not tested in other applications.

Calculated MW 36 kDa. ([Note](#))

Properties

Form	Liquid
Buffer	PBS, 0.1% BSA
Preservative	0.05% Sodium azide
Storage	Store as concentrated solution. Centrifuge briefly prior to opening vial. For short-term storage (1-2 weeks), store at 4°C. For long-term storage, aliquot and store at -20°C or below. Avoid multiple freeze-thaw cycles.
Concentration	1 mg/ml (Please refer to the vial label for the specific concentration.)
Immunogen	Synthetic peptide: V(126) M G V N H E K Y(140)
Purification	Purified by antigen-affinity chromatography
Conjugation	Unconjugated

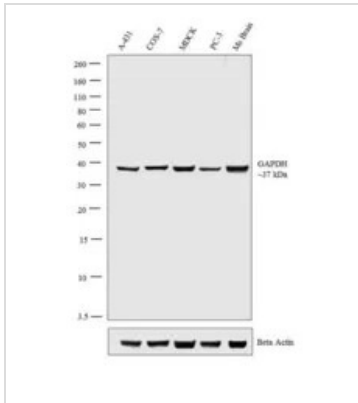
Note

For laboratory research use only. Not for any clinical, therapeutic, or diagnostic use in humans or animals. Not for animal or human consumption.

Purchasers shall not, and agree not to enable third parties to, analyze, copy, reverse engineer or otherwise attempt to determine the structure or sequence of the product.

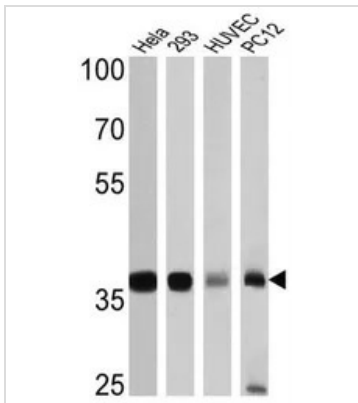


For full product information, images and publications, please visit our [website](#).

DATA IMAGES

GTX82899 WB Image

WB analysis of whole cell extracts (30 µg lysate) of A-431 (Lane 1), COS-7 (Lane 2), MDCK (Lane 3), PC-3 (Lane 4) and tissue extract (30 µg lysate) of Ms Brain (Lane 5) using GTX82899 GAPDH antibody.

Dilution : 1:1000


GTX82899 WB Image

WB analysis of 25 µg of HeLa (Lane 1), 293 (Lane 2), HUVEC (Lane 3) and PC12 (Lane 4) cell lysates using GTX82899 GAPDH antibody.

Dilution : 1:3000



For full product information, images and publications, please visit our [website](https://www.genetex.com).