

CXCR7 antibody

Cat. No. GTX82935

Host	Rabbit
Clonality	Polyclonal
Isotype	IgG
Application	WB, IHC-P, IP, ELISA, IHC
Reactivity	Human, Mouse, Rat, Monkey, Baboon

Reference (2)
Package
50 µg

APPLICATION

Application Note

*Optimal dilutions/concentrations should be determined by the researcher.

Suggested dilution	Recommended dilution
WB	1:500
IHC-P	Assay dependent
IP	1:250
ELISA	Assay dependent
IHC	1:250

Not tested in other applications.

Calculated MW 41 kDa. ([Note](#))

PROPERTIES

Form	Liquid
Buffer	Tris/Glycine, 0.5% BSA, 30% Glycerol
Preservative	0.02% Sodium azide
Storage	Store as concentrated solution. Centrifuge briefly prior to opening vial. For short-term storage (1-2 weeks), store at 4°C. For long-term storage, aliquot and store at -20°C or below. Avoid multiple freeze-thaw cycles.
Concentration	0.68 mg/ml (Please refer to the vial label for the specific concentration.)
Immunogen	Synthetic peptide corresponding to unique amino acid sequence on human CXCR7 protein.
Purification	Purified by affinity chromatography
Conjugation	Unconjugated

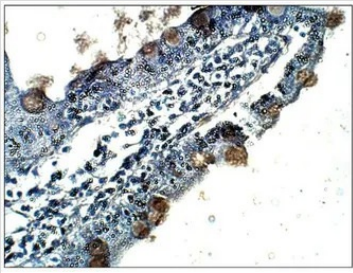


For full product information, images and publications, please visit our [website](#).

For laboratory research use only. Not for any clinical, therapeutic, or diagnostic use in humans or animals. Not for animal or human consumption.

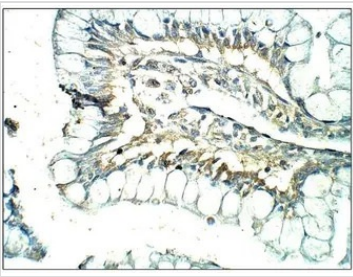
Note

Purchasers shall not, and agree not to enable third parties to, analyze, copy, reverse engineer or otherwise attempt to determine the structure or sequence of the product.

DATA IMAGES

GTX82935 IHC-P Image

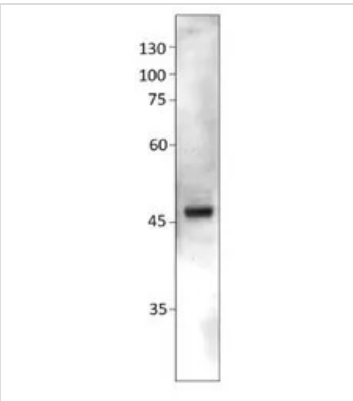
IHC-P analysis of rat small intestine tissue using GTX82935 CXCR7 antibody.

Dilution : 1:100


GTX82935 IHC-P Image

IHC-P analysis of baboon small intestine tissue using GTX82935 CXCR7 antibody.

Dilution : 1:100


GTX82935 WB Image

WB analysis of mouse cerebellum tissue lysate using GTX82935 CXCR7 antibody.

Dilution : 1:250



For full product information, images and publications, please visit our [website](#).