

MBD2 antibody, Internal

Cat. No. GTX82965

Host	Rabbit
Clonality	Polyclonal
Isotype	IgG
Applications	WB, IHC-P
Reactivity	Human, Mouse

References (1)

Package

50 µg

Applications

Application Note

*Optimal dilutions/concentrations should be determined by the researcher.

Suggested dilution	Recommended dilution
WB	0.2-2.5 ug/ml
IHC-P	2-10 ug/ml

Not tested in other applications.

Calculated MW 43 kDa. ([Note](#))

Properties

Form	Liquid
Buffer	PBS, 2% Sucrose
Preservative	0.09% Sodium azide
Storage	Store as concentrated solution. Centrifuge briefly prior to opening vial. For short-term storage (1-2 weeks), store at 4°C. For long-term storage, aliquot and store at -20°C or below. Avoid multiple freeze-thaw cycles.
Concentration	0.5-1 mg/ml (Please refer to the vial label for the specific concentration.)
Immunogen	A synthetic peptide corresponding to an Internal region of Human MBD2
Purification	Protein A purified
Conjugation	Unconjugated

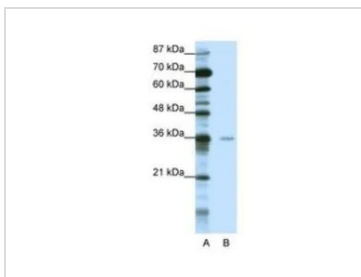
Note

For laboratory research use only. Not for any clinical, therapeutic, or diagnostic use in humans or animals. Not for animal or human consumption.

Purchasers shall not, and agree not to enable third parties to, analyze, copy, reverse engineer or otherwise attempt to determine the structure or sequence of the product.

For full product information, images and publications, please visit our [website](#).

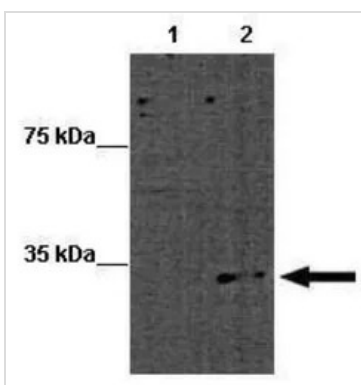
DATA IMAGES

**GTX82965 WB Image**

WB analysis of HepG2 cells using GTX82965 MBD2 antibody at 0.625µg/ml.

Lane A : marker

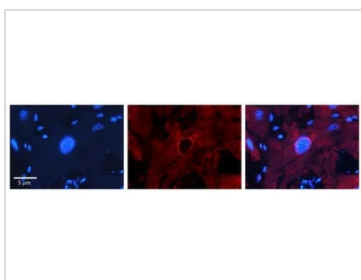
Lane B : HepG2 cells

**GTX82965 WB Image**

WB analysis of mouse ES cells using GTX82965 MBD2 antibody at 1:1000. Loading amount : 15ug.

Lane 1 : MBD2 KO mouse ES cell lysate

Lane 2 : Wild type mouse ES cell lysate

**GTX82965 IHC-P Image**

IHC-P analysis of human heart tissue using GTX82965 MBD2 antibody at 1:100. Left to right: DAPI, MBD2, Merge. Low pH, heat-induced antigen retrieval method utilizing Sodium Citrate buffer.



For full product information, images and publications, please visit our [website](#).