

beta Amyloid antibody

Cat. No. GTX82974

Host	Rabbit
Clonality	Polyclonal
Isotype	IgG
Applications	WB, ICC/IF, IHC-P, IHC-Fr, ELISA
Reactivity	Human, Mouse

Package

50 µg

Applications

Application Note

*Optimal dilutions/concentrations should be determined by the researcher.

Suggested dilution	Recommended dilution
WB	1:1000-1:5000
ICC/IF	1:50-1:200
IHC-P	1:50-1:200
IHC-Fr	1:50-1:200
ELISA	1:10000-1:30000

Not tested in other applications.

Calculated MW 87 kDa. ([Note](#))

Properties

Form	Liquid
Buffer	20mM Potassium Phosphate, 150mM NaCl
Preservative	0.01% Sodium azide
Storage	Store as concentrated solution. Centrifuge briefly prior to opening vial. For short-term storage (1-2 weeks), store at 4°C. For long-term storage, aliquot and store at -20°C or below. Avoid multiple freeze-thaw cycles.
Concentration	1.1 mg/ml (Please refer to the vial label for the specific concentration.)
Immunogen	Synthetic peptide corresponding to an extracellular region of human beta amyloid conjugated to KLH using maleimide.
Purification	Purified by antigen-affinity chromatography.
Conjugation	Unconjugated

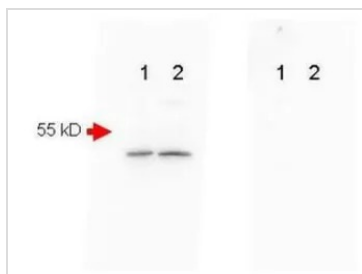


For full product information, images and publications, please visit our [website](#).

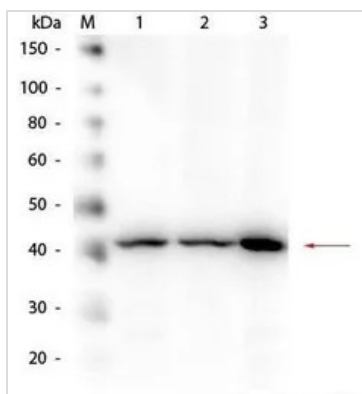
For laboratory research use only. Not for any clinical, therapeutic, or diagnostic use in humans or animals. Not for animal or human consumption.

Note

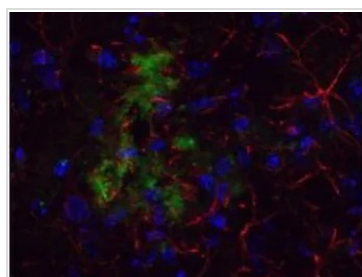
Purchasers shall not, and agree not to enable third parties to, analyze, copy, reverse engineer or otherwise attempt to determine the structure or sequence of the product.

DATA IMAGES

GTx82974 WB Image

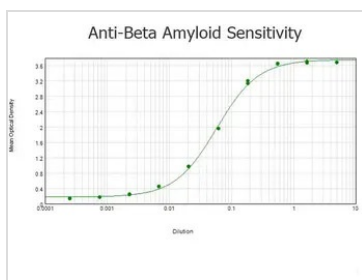
Mouse Brain (Lane 1) and Mouse Spinal Chord (Lane 2) were run on a 4-20% gradient gel, Blocked in 1% BSA-TBS-T 30 min RT and probed with Rb-a-Beta Amyloid (GTx82974) 1:1000 in 1% BSA-TBS-T o/n 4°C. FEMTOMAX chemiluminescent substrate was used for detection of a 40-50 kD band consistent with a higher MW precursor form of beta amyloid. A secondary Ab only control (Shown right) showed no detectable signal.


GTx82974 WB Image

Western Blot of Rabbit anti-Beta Amyloid Antibody. Lane 1: HEK293 WCL. Lane 2: Mouse Brain WCL. Lane 3: A-172 WCL. Load: 10.0 µg per lane. Primary antibody: Beta Amyloid Antibody at 1:1,000 overnight at 4°C. Secondary antibody: Peroxidase Conjugated Goat-a-Rabbit IgG at 1:40,000 for 30 min at RT. Block for 30 min at RT. Predicted/Observed size: 40 kDa, 40 kDa for Beta Amyloid.


GTx82974 IHC-Fr Image

Immunohistochemical detection of beta Amyloid using Anti-Beta Amyloid Antibody on TG APP23 mouse brain cortex frozen sections. Anti-Beta Amyloid Antibody used at 1/200 and incubated for 2 hours in TBS/BSA/Tween/azide. Fluorescent labelled anti rabbit IgG was then added.


GTx82974 ELISA Image

ELISA results of GTx82974 beta Amyloid antibody tested against BSA-conjugated peptide of immunizing peptide. Each well was coated in duplicate with 0.1µg of conjugate. The starting dilution of antibody was 5µg/ml and the X-axis represents the Log10 of a 3-fold dilution. This titration is a 4-parameter curve fit where the IC50 is defined as the titer of the antibody. Assay performed using 3% fish gel, Goat anti-Rabbit IgG Antibody Peroxidase Conjugated and TMB Substrate.



For full product information, images and publications, please visit our [website](https://www.genetex.com).