

LC3B antibody

Cat. No. GTX82986

Host	Rabbit
Clonality	Polyclonal
Isotype	IgG
Applications	WB, ICC/IF, IHC-P, IHC-Fr, EM
Reactivity	Human, Mouse, Rat, Zebrafish, Bovine, Dog, Pig, Primate

References (15)

Package

100 µl

Applications

Application Note

*Optimal dilutions/concentrations should be determined by the researcher.

Suggested dilution	Recommended dilution
WB	1:1000
ICC/IF	0.1 - 2 µg/ml
IHC-P	1:200 - 1:400
IHC-Fr	1:400
EM	Assay dependent

Not tested in other applications.

Calculated MW 15 kDa. ([Note](#))

Properties

Form	Liquid
Buffer	PBS
Preservative	0.02% Sodium azide
Storage	Store as concentrated solution. Centrifuge briefly prior to opening vial. For short-term storage (1-2 weeks), store at 4°C. For long-term storage, aliquot and store at -20°C or below. Avoid multiple freeze-thaw cycles.
Concentration	1 mg/ml (Please refer to the vial label for the specific concentration.)
Immunogen	A synthetic peptide made to the N-terminal region of the human LC3B protein. [UniProt# Q9GZQ8]
Purification	Purified by antigen-affinity chromatography
Conjugation	Unconjugated

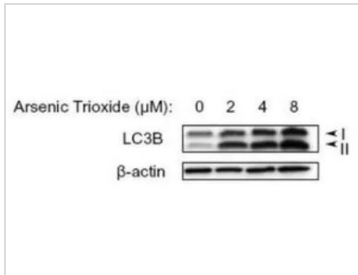


For full product information, images and publications, please visit our [website](#).

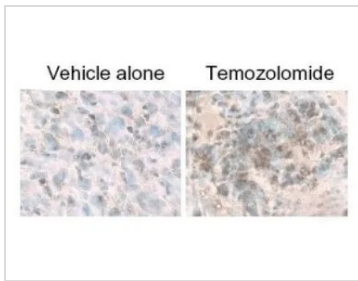
For laboratory research use only. Not for any clinical, therapeutic, or diagnostic use in humans or animals. Not for animal or human consumption.

Note

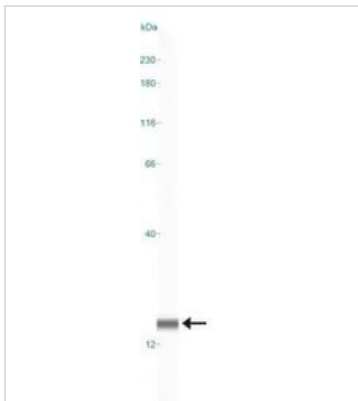
Purchasers shall not, and agree not to enable third parties to, analyze, copy, reverse engineer or otherwise attempt to determine the structure or sequence of the product.

DATA IMAGES

GTX82986 WB Image

WB analysis of arsenic trioxide treated U87-MG cell lysate using GTX82986 LC3B antibody.


GTX82986 IHC-P Image

IHC-P analysis of temozolomide-treated U87-MG xenografts tissue using GTX82986 LC3B antibody.


GTX82986 WB Image

WB analysis of Neuro2a cell lysate using GTX82986 LC3B antibody.



For full product information, images and publications, please visit our [website](https://www.genetex.com).