

p27 Kip1 antibody [3D8]

Cat No. GTX82990

Host	Mouse
Clonality	Monoclonal
Isotype	IgG1
Application	WB, ELISA
Reactivity	Human

Package
100 µl

APPLICATION

Application Note

*Optimal dilutions/concentrations should be determined by the researcher.

Suggested dilution	Dilution
WB	1/500 - 1/2000
ELISA	1/10000

Not tested in other applications.

Calculated MW 22 kDa. ([Note](#))

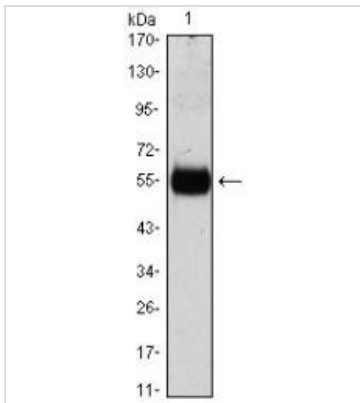
PROPERTIES

Form	Liquid
Buffer	Ascites, 0.03% sodium azide
Storage	Store as concentrated solution. Centrifuge briefly prior to opening vial. For short-term storage (1-2 weeks), store at 4°C. For long-term storage, aliquot and store at -20°C or below. Avoid multiple freeze-thaw cycles.
Immunogen	Purified recombinant fragment of human CDKN1B expressed in E. Coli.
Purification	Unpurified
Conjugation	Unconjugated
Note	For laboratory use only. Not for any clinical, therapeutic, or diagnostic use in humans or animals. Not for animal or human consumption.



For full product information, images and publications, please visit our [website](#).

DATA IMAGES

**GTX82990 WB Image**

WB analysis of p27 Kip1(AA: 1-198)-hlgFc transfected HEK293 cell lysate using GTX82990 p27 Kip1 antibody [3D8].



For full product information, images and publications, please visit our [website](#).