

ETS1 antibody [8A8]

Cat. No. GTX83003

Host	Mouse
Clonality	Monoclonal
Isotype	IgG1
Applications	WB, ICC/IF, IHC-P, FCM, ELISA
Reactivity	Human, Mouse

Package
100 µl

Applications

Application Note

*Optimal dilutions/concentrations should be determined by the researcher.

Suggested dilution	Recommended dilution
WB	1/500 - 1/2000
ICC/IF	1/200 - 1/1000
IHC-P	1/200 - 1/1000
FCM	1/200 - 1/400
ELISA	1/10000

Not tested in other applications.

Calculated MW 50 kDa. ([Note](#))

Properties

Form	Liquid
Buffer	Ascites
Preservative	0.03% Sodium azide
Storage	Store as concentrated solution. Centrifuge briefly prior to opening vial. For short-term storage (1-2 weeks), store at 4°C. For long-term storage, aliquot and store at -20°C or below. Avoid multiple freeze-thaw cycles.
Immunogen	Purified recombinant fragment of human ETS1 expressed in E. Coli.
Purification	Unpurified
Conjugation	Unconjugated

Note

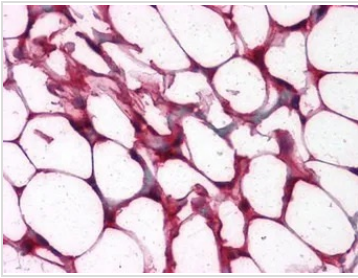
For laboratory research use only. Not for any clinical, therapeutic, or diagnostic use in humans or animals. Not for animal or human consumption.

Purchasers shall not, and agree not to enable third parties to, analyze, copy, reverse engineer or otherwise attempt to determine the structure or sequence of the product.



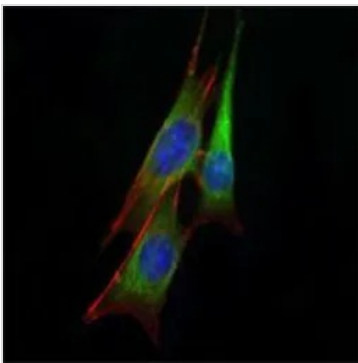
For full product information, images and publications, please visit our [website](#).

DATA IMAGES



GTX83003 IHC-P Image

IHC-P analysis of human colon, adipocytes tissue using GTX83003 ETS1 antibody [8A8].



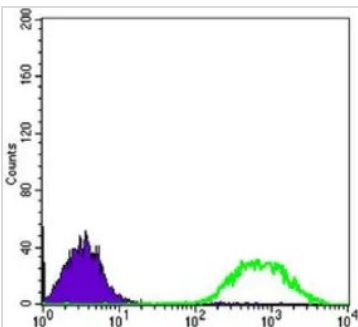
GTX83003 ICC/IF Image

ICC/IF analysis of NIH3T3 cells using GTX83003 ETS1 antibody [8A8].

Green : ETS1

Blue: DRAQ5 fluorescent DNA dye

Red: Actin filaments

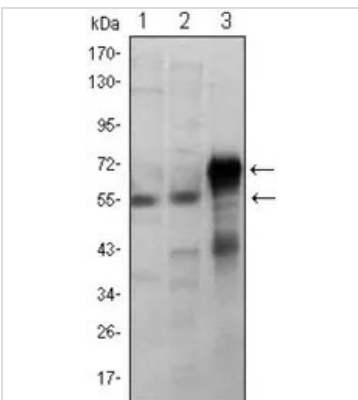


GTX83003 FCM Image

FACS analysis of Jurkat cells using GTX83003 ETS1 antibody [8A8].

Green : ETS1

Purple : negative control



GTX83003 WB Image

WB analysis of Jurkat (1), HepG2 (2) and ETS1-hlgGfC transfected HEK293 (3) cell lysate using GTX83003 ETS1 antibody [8A8].



For full product information, images and publications, please visit our [website](https://www.genetex.com).