

## CD3 zeta antibody [4B10]

**Cat. No. GTX83004**

<b>Host</b>	Mouse
<b>Clonality</b>	Monoclonal
<b>Isotype</b>	IgG1
<b>Applications</b>	WB, ICC/IF, IHC-P, IHC-Fr, FCM, ELISA
<b>Reactivity</b>	Human

References ( 1 )

Package

100 µl

## Applications

**Application Note**

\*Optimal dilutions/concentrations should be determined by the researcher.

Suggested dilution	Recommended dilution
WB	1/500 - 1/2000
ICC/IF	1/200 - 1/1000
IHC-P	1/200 - 1/1000
IHC-Fr	Assay dependent
FCM	1/200 - 1/400
ELISA	1/10000

Not tested in other applications.

**Calculated MW** 19 kDa. ( [Note](#) )

## Properties

<b>Form</b>	Liquid
<b>Buffer</b>	Ascites
<b>Preservative</b>	0.03% Sodium azide
<b>Storage</b>	Store as concentrated solution. Centrifuge briefly prior to opening vial. For short-term storage (1-2 weeks), store at 4°C. For long-term storage, aliquot and store at -20°C or below. Avoid multiple freeze-thaw cycles.
<b>Immunogen</b>	Purified recombinant fragment of human CD247 expressed in E. Coli.
<b>Purification</b>	Unpurified
<b>Conjugation</b>	Unconjugated

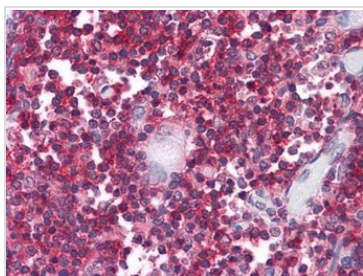
For full product information, images and publications, please visit our [website](#).

For laboratory research use only. Not for any clinical, therapeutic, or diagnostic use in humans or animals. Not for animal or human consumption.

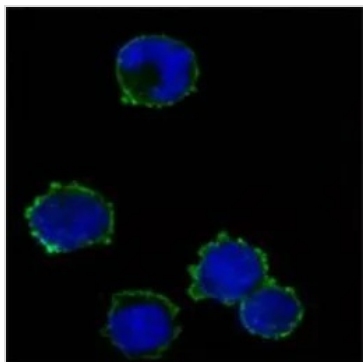
**Note**

Purchasers shall not, and agree not to enable third parties to, analyze, copy, reverse engineer or otherwise attempt to determine the structure or sequence of the product.

## DATA IMAGES

**GTX83004 IHC-P Image**

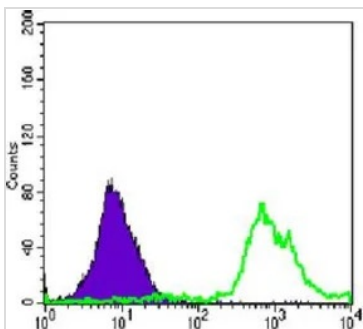
IHC-P analysis of human Thymus tissue using GTX83004 CD3 zeta antibody [4B10].

**GTX83004 ICC/IF Image**

ICC/IF analysis of K562 cells using GTX83004 CD3 zeta antibody [4B10].

Green : CD3 zeta

Blue: DRAQ5 fluorescent DNA dye

**GTX83004 FCM Image**

FACS analysis of Jurkat cells using GTX83004 CD3 zeta antibody [4B10].

Green : CD3 zeta

Purple : negative control



For full product information, images and publications, please visit our [website](#).