

Parathyroid Hormone antibody [2C7]

Cat. No. GTX83007

Host	Mouse
Clonality	Monoclonal
Isotype	IgG2b
Application	WB, ELISA
Reactivity	Human

Package
100 µl

APPLICATION

Application Note

*Optimal dilutions/concentrations should be determined by the researcher.

Suggested dilution	Recommended dilution
WB	1/500 - 1/2000
ELISA	1/10000

Not tested in other applications.

Calculated MW 13 kDa. ([Note](#))

PROPERTIES

Form	Liquid
Buffer	Ascites
Preservative	0.03% Sodium azide
Storage	Store as concentrated solution. Centrifuge briefly prior to opening vial. For short-term storage (1-2 weeks), store at 4°C. For long-term storage, aliquot and store at -20°C or below. Avoid multiple freeze-thaw cycles.
Immunogen	Purified recombinant fragment of human Parathyroid Hormone(aa1-115) expressed in E. Coli.
Purification	Unpurified
Conjugation	Unconjugated

Note

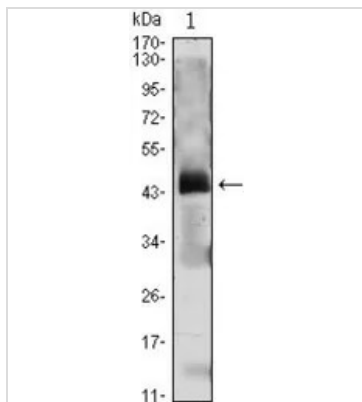
For laboratory research use only. Not for any clinical, therapeutic, or diagnostic use in humans or animals. Not for animal or human consumption.

Purchasers shall not, and agree not to enable third parties to, analyze, copy, reverse engineer or otherwise attempt to determine the structure or sequence of the product.



For full product information, images and publications, please visit our [website](#).

DATA IMAGES



GTx83007 WB Image

WB analysis of Parathyroid Hormone (AA: 1-115)-hlgGFc transfected HEK293 cell lysate using GTx83007 Parathyroid Hormone antibody [2C7].



For full product information, images and publications, please visit our [website](https://www.genetex.com).