

BNP antibody [3A6F7C7]

Cat. No. GTX83059

| | |
|---------------------|--------------|
| Host | Mouse |
| Clonality | Monoclonal |
| Isotype | IgG1 |
| Applications | IHC-P, ELISA |
| Reactivity | Human |

Package
100 µl

Applications

Application Note

*Optimal dilutions/concentrations should be determined by the researcher.

| Suggested dilution | Recommended dilution |
|--------------------|----------------------|
| IHC-P | 1/200 - 1/1000 |
| ELISA | 1/10000 |

Not tested in other applications.

Properties

| | |
|---------------------|--|
| Form | Liquid |
| Buffer | Ascites |
| Preservative | 0.03% Sodium azide |
| Storage | Store as concentrated solution. Centrifuge briefly prior to opening vial. For short-term storage (1-2 weeks), store at 4°C. For long-term storage, aliquot and store at -20°C or below. Avoid multiple freeze-thaw cycles. |
| Immunogen | Synthetic peptide corresponding to aa (Glu-Pro-Leu-Gln-Glu-Ser-Pro-Arg-Pro-Thr-Gly-Val-Trp-Cys) of human BNP, conjugated to KLH. |
| Purification | Unpurified |
| Conjugation | Unconjugated |

Note

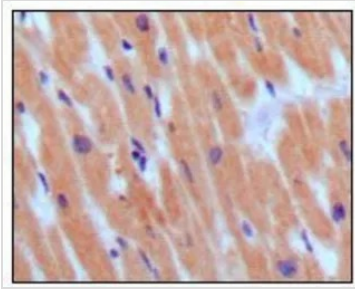
For laboratory research use only. Not for any clinical, therapeutic, or diagnostic use in humans or animals. Not for animal or human consumption.

Purchasers shall not, and agree not to enable third parties to, analyze, copy, reverse engineer or otherwise attempt to determine the structure or sequence of the product.



For full product information, images and publications, please visit our [website](#).

DATA IMAGES

**GTX83059 IHC-P Image**

IHC-P analysis of human normal myocardium using GTX83059 BNP antibody [3A6F7C7].



For full product information, images and publications, please visit our [website](#).