

Cytokeratin 5 antibody [3E2F1]

Cat. No. GTX83080

Host	Mouse
Clonality	Monoclonal
Isotype	IgG1
Applications	WB, IHC-P, ELISA
Reactivity	Human

Package
100 µl

Applications

Application Note

*Optimal dilutions/concentrations should be determined by the researcher.

Suggested dilution	Recommended dilution
WB	1/500 - 1/2000
IHC-P	1/200 - 1/1000
ELISA	1/10000

Not tested in other applications.

Calculated MW 62 kDa. ([Note](#))

Properties

Form	Liquid
Buffer	Ascites
Preservative	0.03% Sodium azide
Storage	Store as concentrated solution. Centrifuge briefly prior to opening vial. For short-term storage (1-2 weeks), store at 4°C. For long-term storage, aliquot and store at -20°C or below. Avoid multiple freeze-thaw cycles.
Immunogen	Purified recombinant fragment of CK5 expressed in E. Coli.
Purification	Unpurified
Conjugation	Unconjugated

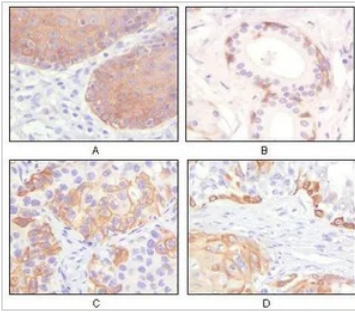
Note

For laboratory research use only. Not for any clinical, therapeutic, or diagnostic use in humans or animals. Not for animal or human consumption.

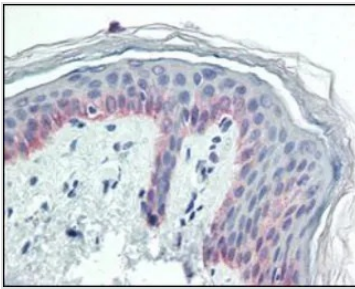
Purchasers shall not, and agree not to enable third parties to, analyze, copy, reverse engineer or otherwise attempt to determine the structure or sequence of the product.



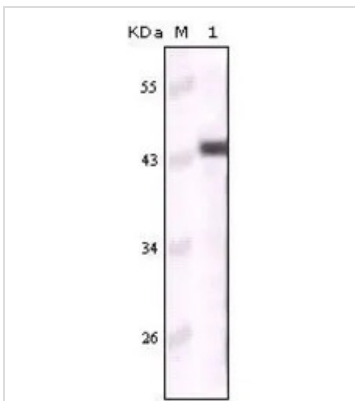
For full product information, images and publications, please visit our [website](#).

DATA IMAGES

GTx83080 IHC-P Image

IHC-P analysis of human esophagus epithelium (A), salivary gland basal cell (B), lung squamous cell carcinoma (C), endometrium adenosquamous carcinoma (D) using GTx83080 Cytokeratin 5 antibody [3E2F1].


GTx83080 IHC-P Image

IHC-P analysis of human skin tissue using GTx83080 Cytokeratin 5 antibody [3E2F1].


GTx83080 WB Image

WB analysis of truncated Cytokeratin 5 recombinant protein using GTx83080 Cytokeratin 5 antibody [3E2F1].



For full product information, images and publications, please visit our [website](https://www.genetex.com).