

## LPP antibody [8B3A11]

**Cat. No. GTX83092**

<b>Host</b>	Mouse
<b>Clonality</b>	Monoclonal
<b>Isotype</b>	IgG1
<b>Applications</b>	WB, ICC/IF, IHC-P, ELISA
<b>Reactivity</b>	Human, Mouse, Hamster, Monkey

**Package**  
100 µl

## Applications

**Application Note**

\*Optimal dilutions/concentrations should be determined by the researcher.

Suggested dilution	Recommended dilution
WB	1/500 - 1/2000
ICC/IF	1/200 - 1/1000
IHC-P	1/200 - 1/1000
ELISA	1/10000

Not tested in other applications.

**Calculated MW** 66 kDa. ([Note](#))

## Properties

<b>Form</b>	Liquid
<b>Buffer</b>	Ascites
<b>Preservative</b>	0.03% Sodium azide
<b>Storage</b>	Store as concentrated solution. Centrifuge briefly prior to opening vial. For short-term storage (1-2 weeks), store at 4°C. For long-term storage, aliquot and store at -20°C or below. Avoid multiple freeze-thaw cycles.
<b>Immunogen</b>	Purified recombinant fragment of human LPP expressed in E. Coli.
<b>Purification</b>	Unpurified
<b>Conjugation</b>	Unconjugated

**Note**

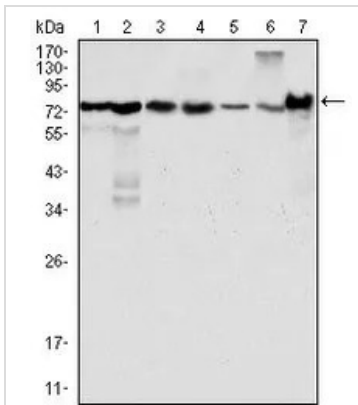
For laboratory research use only. Not for any clinical, therapeutic, or diagnostic use in humans or animals. Not for animal or human consumption.

Purchasers shall not, and agree not to enable third parties to, analyze, copy, reverse engineer or otherwise attempt to determine the structure or sequence of the product.

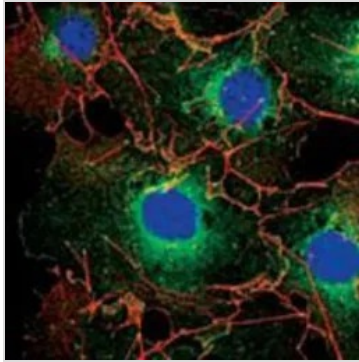


For full product information, images and publications, please visit our [website](#).

## DATA IMAGES

**GTX83092 WB Image**

WB analysis of HeLa (1), NIH3T3 (2), COS (3), Caki (4), MCF-7 (5), HepG2 (6) and SMMC-7721 (7) cell lysate using GTX83092 LPP antibody [8B3A11].

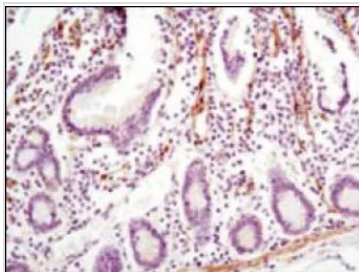
**GTX83092 ICC/IF Image**

ICC/IF analysis of COS cells using GTX83092 LPP antibody [8B3A11].

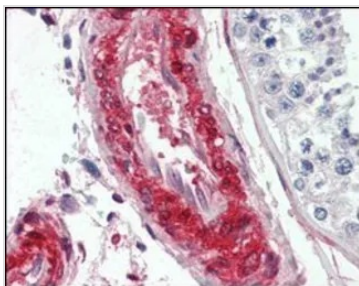
Green : LPP

Blue: DRAQ5 fluorescent DNA dye

Red: Actin filaments

**GTX83092 IHC-P Image**

IHC-P analysis of human small intestine using GTX83092 LPP antibody [8B3A11].

**GTX83092 IHC-P Image**

IHC-P analysis of human vessels tissue using GTX83092 LPP antibody [8B3A11].



For full product information, images and publications, please visit our [website](#).