

PEG10 antibody [1B1C4]

Cat. No. GTX83101

Host	Mouse
Clonality	Monoclonal
Isotype	IgG1
Applications	WB, ICC/IF, IHC-P, ELISA
Reactivity	Human

Package
100 µl

Applications

Application Note

*Optimal dilutions/concentrations should be determined by the researcher.

Suggested dilution	Recommended dilution
WB	1/500 - 1/2000
ICC/IF	1/200 - 1/1000
IHC-P	1/200 - 1/1000
ELISA	1/10000

Not tested in other applications.

Calculated MW 80 kDa. ([Note](#))

Properties

Form	Liquid
Buffer	Ascites
Preservative	0.03% Sodium azide
Storage	Store as concentrated solution. Centrifuge briefly prior to opening vial. For short-term storage (1-2 weeks), store at 4°C. For long-term storage, aliquot and store at -20°C or below. Avoid multiple freeze-thaw cycles.
Immunogen	Purified recombinant fragment of PEG10 (aa1-120) expressed in E. Coli.
Purification	Unpurified
Conjugation	Unconjugated

Note

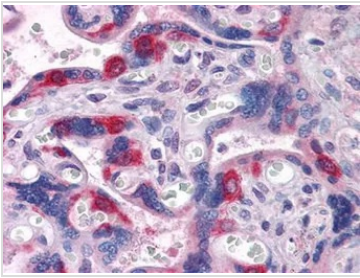
For laboratory research use only. Not for any clinical, therapeutic, or diagnostic use in humans or animals. Not for animal or human consumption.

Purchasers shall not, and agree not to enable third parties to, analyze, copy, reverse engineer or otherwise attempt to determine the structure or sequence of the product.



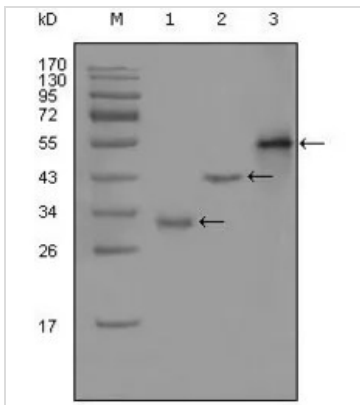
For full product information, images and publications, please visit our [website](#).

DATA IMAGES



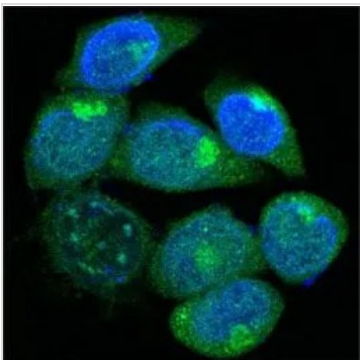
GTX83101 IHC-P Image

IHC-P analysis of human Placenta tissue using GTX83101 PEG10 antibody [1B1C4].



GTX83101 WB Image

WB analysis of truncated Trx-PEG10 recombinant protein (1), truncated GST-PEG10 (aa1-120) recombinant protein (2) and full-length PEG10 (aa1-325)-hlgGfc transfected CHO-K1 cell lysate (3) using GTX83101 PEG10 antibody [1B1C4].



GTX83101 ICC/IF Image

ICC/IF analysis of methanol-fixed HepG2 cells using GTX83101 PEG10 antibody [1B1C4].

Green : PEG10

Blue: DRAQ5 fluorescent DNA dye



For full product information, images and publications, please visit our [website](#).