

CD44 antibody [8E2F3]

Cat. No. GTX83114

| | |
|---------------------|-----------------------------------|
| Host | Mouse |
| Clonality | Monoclonal |
| Isotype | IgG1 |
| Applications | WB, ICC/IF, IHC-P, FCM, IP, ELISA |
| Reactivity | Human, Mouse, Pig |

References (3)

Package

100 µl

Applications

Application Note

*Optimal dilutions/concentrations should be determined by the researcher.

| Suggested dilution | Recommended dilution |
|--------------------|----------------------|
| WB | 1:500-1:2000 |
| ICC/IF | 1:200-1:1000 |
| IHC-P | 1:200-1:1000 |
| FCM | 1:200-1:400 |
| IP | Assay dependent |
| ELISA | 1:10000 |

Not tested in other applications.

Calculated MW 82 kDa. ([Note](#))

Properties

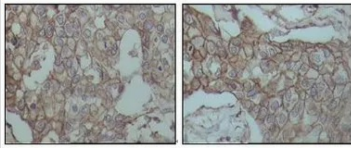
| | |
|---------------------|--|
| Form | Liquid |
| Buffer | Ascitic fluid containing 0.03% sodium azide. |
| Storage | Store as concentrated solution. Centrifuge briefly prior to opening vial. For short-term storage (1-2 weeks), store at 4°C. For long-term storage, aliquot and store at -20°C or below. Avoid multiple freeze-thaw cycles. |
| Immunogen | The immunogen corresponding to a region within amino acids 628 and 699 of human CD44 expressed in E. Coli. |
| Purification | Unpurified |
| Conjugation | Unconjugated |

Note

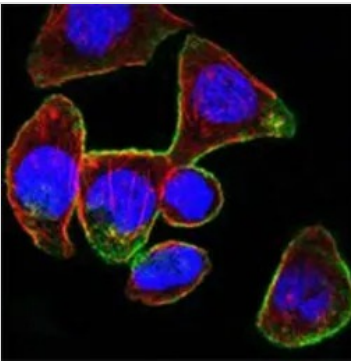
For laboratory research use only. Not for any clinical, therapeutic, or diagnostic use in humans or animals. Not for animal or human consumption.

Purchasers shall not, and agree not to enable third parties to, analyze, copy, reverse engineer or otherwise attempt to determine the structure or sequence of the product.

For full product information, images and publications, please visit our [website](#).

DATA IMAGES

GTX83114 IHC-P Image

IHC-P analysis of human breast carcinoma tissue using GTX83114 CD44 antibody [8E2F3].

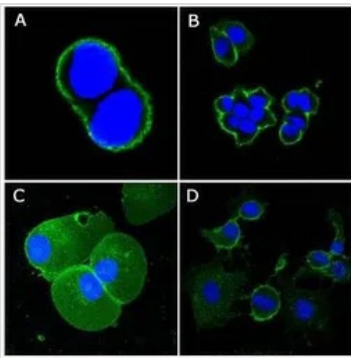

GTX83114 ICC/IF Image

ICC/IF analysis of PANC-1 cells using GTX83114 CD44 antibody [8E2F3].

Green : CD44

Blue: DRAQ5 fluorescent DNA dye

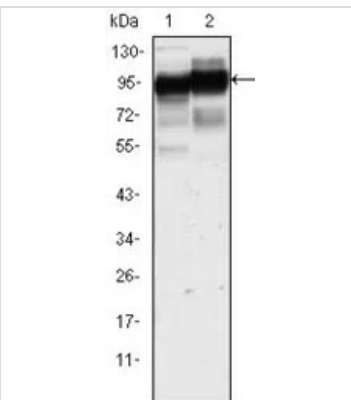
Red: Actin filaments


GTX83114 ICC/IF Image

ICC/IF analysis of methanol-fixed A431 (A), HeLa (B), PANC-1 (C) and EC (D) cells using GTX83114 CD44 antibody [8E2F3].

Green : CD44

Blue: DRAQ5 fluorescent DNA dye


GTX83114 WB Image

WB analysis of HeLa (1) and HUVE-12(2) cell lysate using GTX83114 CD44 antibody [8E2F3].



For full product information, images and publications, please visit our [website](https://www.genetex.com).