

## Islet 1 antibody [1B1]

Cat. No. GTX83120

Host	Mouse
Clonality	Monoclonal
Isotype	IgG1
Application	WB, ICC/IF, ELISA
Reactivity	Human

Package  
100 µl

## APPLICATION

## Application Note

\*Optimal dilutions/concentrations should be determined by the researcher.

Suggested dilution	Recommended dilution
WB	1/500 - 1/2000
ICC/IF	1/200 - 1/1000
ELISA	1/10000

Not tested in other applications.

Calculated MW 39 kDa. ( [Note](#) )

## PROPERTIES

Form	Liquid
Buffer	Ascites
Preservative	0.03% Sodium azide
Storage	Store as concentrated solution. Centrifuge briefly prior to opening vial. For short-term storage (1-2 weeks), store at 4°C. For long-term storage, aliquot and store at -20°C or below. Avoid multiple freeze-thaw cycles.
Immunogen	Purified recombinant fragment of human ISL1 expressed in E. Coli.
Purification	Unpurified
Conjugation	Unconjugated

## Note

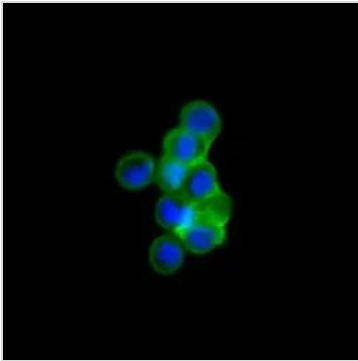
For laboratory research use only. Not for any clinical, therapeutic, or diagnostic use in humans or animals. Not for animal or human consumption.

Purchasers shall not, and agree not to enable third parties to, analyze, copy, reverse engineer or otherwise attempt to determine the structure or sequence of the product.



For full product information, images and publications, please visit our [website](#).

## DATA IMAGES

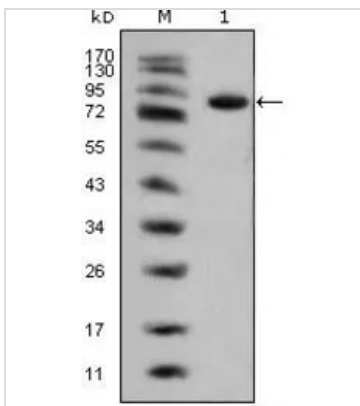


### GTX83120 ICC/IF Image

ICC/IF analysis of HEK293 cells trasfected with full-length ISL1-hlgGfC using GTX83120 Islet 1 antibody [1B1].

Green : Islet 1

Blue: DRAQ5 fluorescent DNA dye



### GTX83120 WB Image

WB analysis of full-length Islet 1 (aa1-349)-hlgGfC transfected HEK293 cell lysate using GTX83120 Islet 1 antibody [1B1].



For full product information, images and publications, please visit our [website](https://www.genetex.com).