

## B-Raf antibody [1H12]

Cat. No. GTX83134

<b>Host</b>	Mouse
<b>Clonality</b>	Monoclonal
<b>Isotype</b>	IgG1
<b>Applications</b>	WB, ICC/IF, IHC-P, ELISA
<b>Reactivity</b>	Human, Mouse

**Package**  
100 µl

## Applications

## Application Note

\*Optimal dilutions/concentrations should be determined by the researcher.

Suggested dilution	Recommended dilution
WB	1/500 - 1/2000
ICC/IF	1/200 - 1/1000
IHC-P	1/200 - 1/1000
ELISA	1/10000

Not tested in other applications.

**Calculated MW** 84 kDa. ( [Note](#) )

## Properties

<b>Form</b>	Liquid
<b>Buffer</b>	Ascites
<b>Preservative</b>	0.03% Sodium azide
<b>Storage</b>	Store as concentrated solution. Centrifuge briefly prior to opening vial. For short-term storage (1-2 weeks), store at 4°C. For long-term storage, aliquot and store at -20°C or below. Avoid multiple freeze-thaw cycles.
<b>Immunogen</b>	Purified recombinant fragment of human BRAF expressed in E. Coli.
<b>Purification</b>	Unpurified
<b>Conjugation</b>	Unconjugated

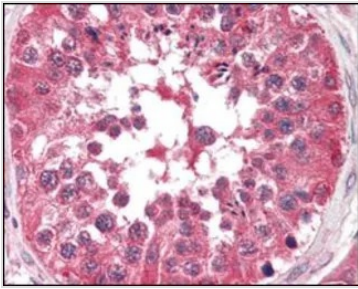
## Note

For laboratory research use only. Not for any clinical, therapeutic, or diagnostic use in humans or animals. Not for animal or human consumption.

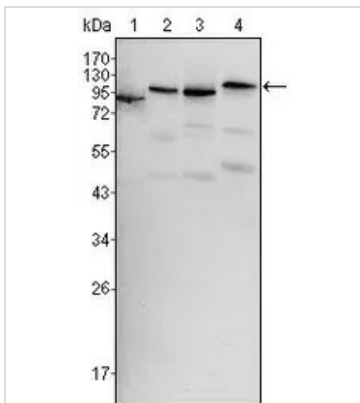
Purchasers shall not, and agree not to enable third parties to, analyze, copy, reverse engineer or otherwise attempt to determine the structure or sequence of the product.



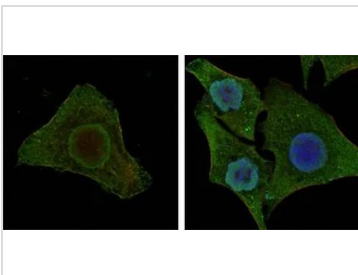
For full product information, images and publications, please visit our [website](#).

**DATA IMAGES**

**GTx83134 IHC-P Image**

IHC-P analysis of human testis tissue using GTx83134 B-Raf antibody [1H12].


**GTx83134 WB Image**

WB analysis of HeLa (1), HL60 (2), HepG2 (3) and NIH3T3 (4) cell lysate using GTx83134 B-Raf antibody [1H12].


**GTx83134 ICC/IF Image**

ICC/IF analysis of MCF-7 (left) and HepG2 (right) cells using GTx83134 B-Raf antibody [1H12].

Green : B-Raf

Blue: DRAQ5 fluorescent DNA dye

Red: Actin filaments



For full product information, images and publications, please visit our [website](https://www.genetex.com).