

## Cytokeratin 18 antibody [4D11E4]

Cat. No. GTX83142

<b>Host</b>	Mouse
<b>Clonality</b>	Monoclonal
<b>Isotype</b>	IgG2b
<b>Applications</b>	WB, IHC-P, ELISA
<b>Reactivity</b>	Human, Mouse

Package  
100 µl

## Applications

## Application Note

\*Optimal dilutions/concentrations should be determined by the researcher.

Suggested dilution	Recommended dilution
WB	1/500 - 1/2000
IHC-P	1/200 - 1/1000
ELISA	1/10000

Not tested in other applications.

**Calculated MW** 48 kDa. ( [Note](#) )

## Properties

<b>Form</b>	Liquid
<b>Buffer</b>	Ascites
<b>Preservative</b>	0.03% Sodium azide
<b>Storage</b>	Store as concentrated solution. Centrifuge briefly prior to opening vial. For short-term storage (1-2 weeks), store at 4°C. For long-term storage, aliquot and store at -20°C or below. Avoid multiple freeze-thaw cycles.
<b>Immunogen</b>	Purified recombinant fragment of human Cytokeratin 18 (aa391-483) expressed in E. Coli.
<b>Purification</b>	Unpurified
<b>Conjugation</b>	Unconjugated

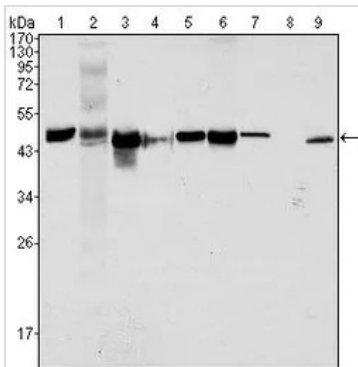
## Note

For laboratory research use only. Not for any clinical, therapeutic, or diagnostic use in humans or animals. Not for animal or human consumption.

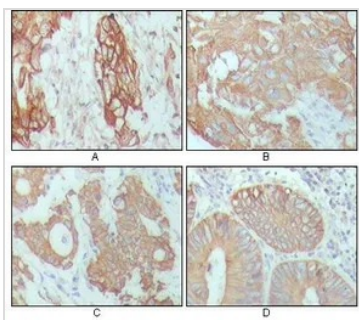
Purchasers shall not, and agree not to enable third parties to, analyze, copy, reverse engineer or otherwise attempt to determine the structure or sequence of the product.



For full product information, images and publications, please visit our [website](#).

**DATA IMAGES**

**GTKX83142 WB Image**

WB analysis of HeLa (1), NIH3T3 (2), A549 (3), Jurkat (4), MCF-7(5), HepG2 (6), A431 (7), HEK293 (8) and K562 (9) cell lysate using GTKX83142 Cytokeratin 18 antibody [4D11E4].


**GTKX83142 IHC-P Image**

IHC-P analysis of human breast carcinoma (A), hepatocarcinoma (B), stomach cancer (C) and colon cancer tissue (D) using GTKX83142 Cytokeratin 18 antibody [4D11E4].



For full product information, images and publications, please visit our [website](https://www.genetex.com).