

ERK2 antibody [4C11]

Cat. No. GTX83148

Host	Mouse
Clonality	Monoclonal
Isotype	IgG2a
Application	WB, ICC/IF, IHC-P, ELISA
Reactivity	Human, Mouse, Monkey

Package
100 µl

APPLICATION

Application Note

*Optimal dilutions/concentrations should be determined by the researcher.

Suggested dilution	Recommended dilution
WB	1/500 - 1/2000
ICC/IF	1/200 - 1/1000
IHC-P	1/200 - 1/1000
ELISA	1/10000

Not tested in other applications.

Calculated MW 41 kDa. ([Note](#))

PROPERTIES

Form	Liquid
Buffer	PBS
Preservative	0.03% Sodium azide
Storage	Store as concentrated solution. Centrifuge briefly prior to opening vial. For short-term storage (1-2 weeks), store at 4°C. For long-term storage, aliquot and store at -20°C or below. Avoid multiple freeze-thaw cycles.
Concentration	Batch dependent (Please refer to the vial label for the specific concentration.)
Immunogen	Purified recombinant fragment of human ERK2 expressed in E. Coli.
Purification	Protein G Purified
Conjugation	Unconjugated

Note

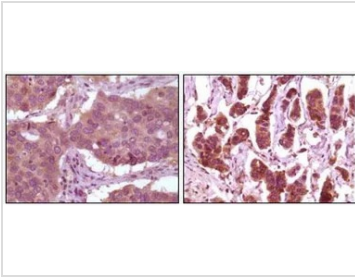
For laboratory research use only. Not for any clinical, therapeutic, or diagnostic use in humans or animals. Not for animal or human consumption.

Purchasers shall not, and agree not to enable third parties to, analyze, copy, reverse engineer or otherwise attempt to determine the structure or sequence of the product.



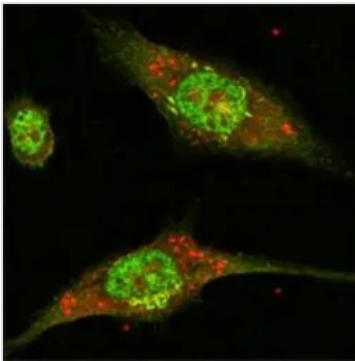
For full product information, images and publications, please visit our [website](#).

DATA IMAGES



GTX83148 IHC-P Image

IHC-P analysis of human lung carcinoma (left) and breast carcinoma (right) using GTX83148 ERK2 antibody [4C11].

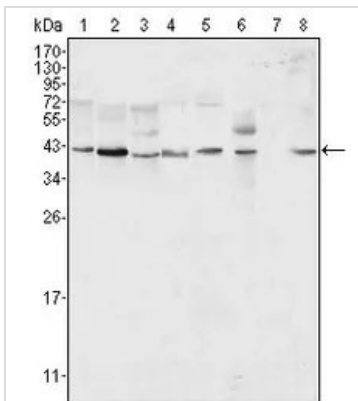


GTX83148 ICC/IF Image

ICC/IF analysis of Eca-109 cells using GTX83148 ERK2 antibody [4C11].

Green : ERK2

Red : Actin filament



GTX83148 WB Image

WB analysis of HeLa (1), NIH3T3 (2), MCF-7 (3), HEK293 (4), Jurkat (5), A549 (6), NTERA-2 (7) and SMMC-7721 (8) cell lysate using GTX83148 ERK2 antibody [4C11].



For full product information, images and publications, please visit our [website](https://www.genetex.com).