

Her3 / ErbB3 antibody [2B11D11]

Cat. No. GTX83177

Host	Mouse
Clonality	Monoclonal
Isotype	IgG1
Applications	WB, ELISA
Reactivity	Human

Package
100 µl

Applications

Application Note

*Optimal dilutions/concentrations should be determined by the researcher.

Suggested dilution	Recommended dilution
WB	1/500 - 1/2000
ELISA	1/10000

Not tested in other applications.

Calculated MW 148 kDa. ([Note](#))

Properties

Form Liquid

Buffer Ascites

Preservative 0.03% Sodium azide

Storage Store as concentrated solution. Centrifuge briefly prior to opening vial. For short-term storage (1-2 weeks), store at 4°C. For long-term storage, aliquot and store at -20°C or below. Avoid multiple freeze-thaw cycles.

Immunogen Purified recombinant fragment of ERBB3 (aa1175-1275) expressed in E. Coli.

Purification Unpurified

Conjugation Unconjugated

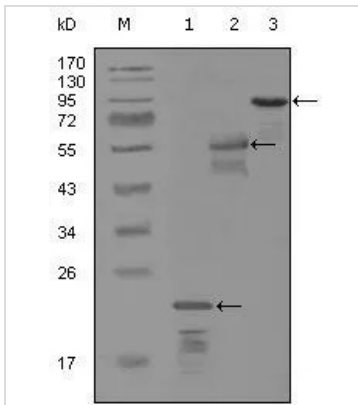
Note

For laboratory research use only. Not for any clinical, therapeutic, or diagnostic use in humans or animals. Not for animal or human consumption.

Purchasers shall not, and agree not to enable third parties to, analyze, copy, reverse engineer or otherwise attempt to determine the structure or sequence of the product.



For full product information, images and publications, please visit our [website](#).

DATA IMAGES

GTX83177 WB Image

WB analysis of truncated Trx-ERBB3 recombinant protein (1), MBP-ERBB3 (aa1175-1275) recombinant protein (2) and truncated ERBB3(aa665-1342)-hlgGfc transfected CHO-K1 cell lysate (3) using GTX83177 Her3 / ErbB3 antibody [2B11D11].



For full product information, images and publications, please visit our [website](#).