

EphB6 antibody [8E7H12]

Cat. No. GTX83219

Host	Mouse
Clonality	Monoclonal
Isotype	IgG1
Applications	WB, IHC-P, ELISA
Reactivity	Human, Mouse

Package
100 µl

Applications

Application Note

*Optimal dilutions/concentrations should be determined by the researcher.

Suggested dilution	Recommended dilution
WB	1/500 - 1/2000
IHC-P	1/200 - 1/1000
ELISA	1/10000

Not tested in other applications.

Calculated MW	111 kDa. (Note)
Product Note	It is only specific to EPHB6

Properties

Form	Liquid
Buffer	PBS
Preservative	0.03% Sodium azide
Storage	Store as concentrated solution. Centrifuge briefly prior to opening vial. For short-term storage (1-2 weeks), store at 4°C. For long-term storage, aliquot and store at -20°C or below. Avoid multiple freeze-thaw cycles.
Concentration	Batch dependent (Please refer to the vial label for the specific concentration.)
Immunogen	Purified recombinant fragment of EphB6 expressed in E. Coli.
Purification	Protein G Purified
Conjugation	Unconjugated



For full product information, images and publications, please visit our [website](#).

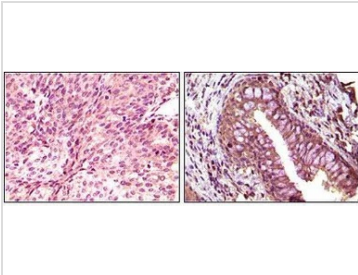
Date 2026 / 01 / 11 Page 1 of 2

For laboratory research use only. Not for any clinical, therapeutic, or diagnostic use in humans or animals. Not for animal or human consumption.

Note

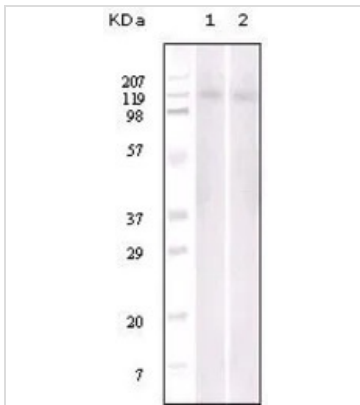
Purchasers shall not, and agree not to enable third parties to, analyze, copy, reverse engineer or otherwise attempt to determine the structure or sequence of the product.

DATA IMAGES



GTX83219 IHC-P Image

IHC-P analysis of human bladder carcinoma (left) and return carcinoma (right) tissue using GTX83219 EphB6 antibody [8E7H12].



GTX83219 WB Image

WB analysis of Jurkat (1) and NIH3T3 (2) cell lysate using GTX83219 EphB6 antibody [8E7H12].



For full product information, images and publications, please visit our [website](#).