

## KSHV ORF62 antibody [5B7B6]

Cat. No. GTX83235

<b>Host</b>	Mouse
<b>Clonality</b>	Monoclonal
<b>Isotype</b>	IgM
<b>Applications</b>	WB, ICC/IF, ELISA
<b>Reactivity</b>	Kaposi's sarcoma-associated herpesvirus

Package  
100 µl

## Applications

## Application Note

\*Optimal dilutions/concentrations should be determined by the researcher.

Suggested dilution	Recommended dilution
WB	1/500 - 1/2000
ICC/IF	1/200 - 1/1000
ELISA	1/10000

Not tested in other applications.

**Calculated MW** 36 kDa. ([Note](#))

## Properties

<b>Form</b>	Liquid
<b>Buffer</b>	Ascites
<b>Preservative</b>	0.03% Sodium azide
<b>Storage</b>	Store as concentrated solution. Centrifuge briefly prior to opening vial. For short-term storage (1-2 weeks), store at 4°C. For long-term storage, aliquot and store at -20°C or below. Avoid multiple freeze-thaw cycles.
<b>Immunogen</b>	Purified recombinant fragment of human KSHV ORF62 expressed in E. Coli.
<b>Purification</b>	Unpurified
<b>Conjugation</b>	Unconjugated

## Note

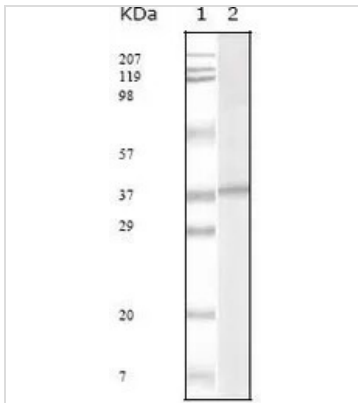
For laboratory research use only. Not for any clinical, therapeutic, or diagnostic use in humans or animals. Not for animal or human consumption.

Purchasers shall not, and agree not to enable third parties to, analyze, copy, reverse engineer or otherwise attempt to determine the structure or sequence of the product.

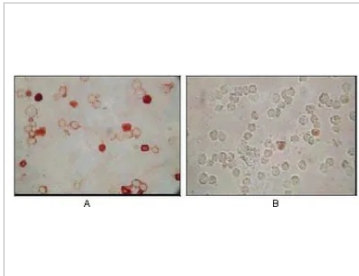


For full product information, images and publications, please visit our [website](#).

## DATA IMAGES

**GTX83235 WB Image**

WB analysis of KSHV ORF62 recombinant protein using GTX83235 KSHV ORF62 antibody [5B7B6].

**GTX83235 ICC/IF Image**

ICC/IF analysis of TPA induced BCBL-1 cells (A) and uninduced BCBL-1 cells (B) with AEC staining using GTX83235 KSHV ORF62 antibody [5B7B6].



For full product information, images and publications, please visit our [website](#).