

## AKT2 antibody [1B6]

Cat. No. GTX83257

Host	Mouse
Clonality	Monoclonal
Isotype	IgG2b
Applications	WB, ICC/IF, IHC-P, ELISA
Reactivity	Human, Rat, Monkey

Package  
100 µl

## Applications

## Application Note

\*Optimal dilutions/concentrations should be determined by the researcher.

Suggested dilution	Recommended dilution
WB	1/500 - 1/2000
ICC/IF	1/200 - 1/1000
IHC-P	1/200 - 1/1000
ELISA	1/10000

Not tested in other applications.

Calculated MW 56 kDa. ( [Note](#) )

## Properties

Form	Liquid
Buffer	Ascites
Preservative	0.03% Sodium azide
Storage	Store as concentrated solution. Centrifuge briefly prior to opening vial. For short-term storage (1-2 weeks), store at 4°C. For long-term storage, aliquot and store at -20°C or below. Avoid multiple freeze-thaw cycles.
Immunogen	Purified recombinant fragment of human AKT2 expressed in E. Coli.
Purification	Unpurified
Conjugation	Unconjugated

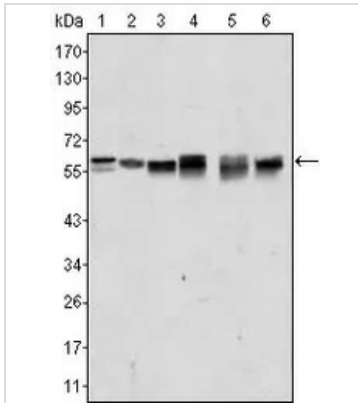
## Note

For laboratory research use only. Not for any clinical, therapeutic, or diagnostic use in humans or animals. Not for animal or human consumption.

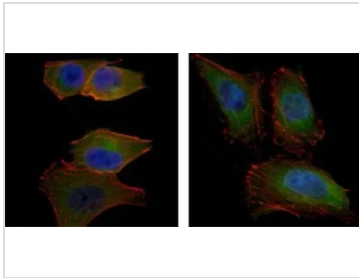
Purchasers shall not, and agree not to enable third parties to, analyze, copy, reverse engineer or otherwise attempt to determine the structure or sequence of the product.



For full product information, images and publications, please visit our [website](#).

**DATA IMAGES**

**GTK83257 WB Image**

WB analysis of A431 (1), Jurkat (2), HEK293 (3), A549 (4), MCF-7 (5) and PC-12 (6) cell lysate using GTK83257 AKT2 antibody [1B6].

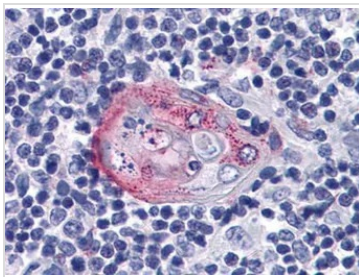

**GTK83257 ICC/IF Image**

ICC/IF analysis of PANC-1 (left) and HeLa (right) cells using GTK83257 AKT2 antibody [1B6].

Green : AKT2

Blue: DRAQ5 fluorescent DNA dye

Red: Actin filaments


**GTK83257 IHC-P Image**

IHC-P analysis of human Thymus tissue using GTK83257 AKT2 antibody [1B6].



For full product information, images and publications, please visit our [website](https://www.genetex.com).