

## LSD1 antibody [1B2E5]

Cat. No. GTX83263

<b>Host</b>	Mouse
<b>Clonality</b>	Monoclonal
<b>Isotype</b>	IgG1
<b>Applications</b>	WB, IHC-P, ELISA
<b>Reactivity</b>	Human, Mouse, Monkey

Package  
100 µl

## Applications

## Application Note

\*Optimal dilutions/concentrations should be determined by the researcher.

Suggested dilution	Recommended dilution
WB	1/500 - 1/2000
IHC-P	1/200 - 1/1000
ELISA	1/10000

Not tested in other applications.

**Calculated MW** 93 kDa. ([Note](#))

## Properties

<b>Form</b>	Liquid
<b>Buffer</b>	Ascites
<b>Preservative</b>	0.03% Sodium azide
<b>Storage</b>	Store as concentrated solution. Centrifuge briefly prior to opening vial. For short-term storage (1-2 weeks), store at 4°C. For long-term storage, aliquot and store at -20°C or below. Avoid multiple freeze-thaw cycles.
<b>Immunogen</b>	Purified recombinant fragment of human LSD1 expressed in E. Coli.
<b>Purification</b>	Unpurified
<b>Conjugation</b>	Unconjugated

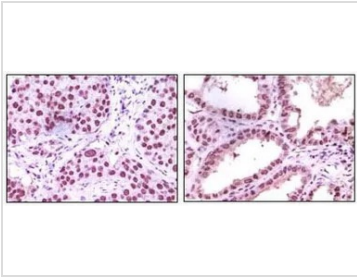
**Note** For laboratory research use only. Not for any clinical, therapeutic, or diagnostic use in humans or animals. Not for animal or human consumption.

Purchasers shall not, and agree not to enable third parties to, analyze, copy, reverse engineer or otherwise attempt to determine the structure or sequence of the product.

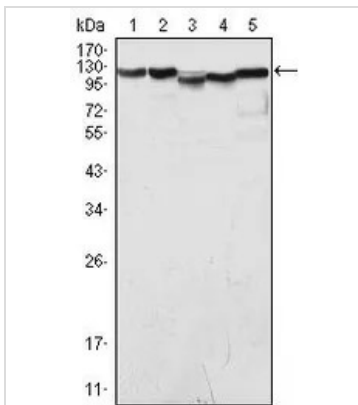


For full product information, images and publications, please visit our [website](#).

## DATA IMAGES

**GTX83263 IHC-P Image**

IHC-P analysis of human lung carcinoma (left) and kidney carcinoma (right) using GTX83263 LSD1 antibody [1B2E5].

**GTX83263 WB Image**

WB analysis of COS (1), HeLa (2), NIH3T3 (3), A549 (4) and Jurkat (5) cell lysate using GTX83263 LSD1 antibody [1B2E5].



For full product information, images and publications, please visit our [website](#).