

Wnt5a antibody [3D10]

Cat. No. GTX83266

Host	Mouse
Clonality	Monoclonal
Isotype	IgG1
Application	WB, IHC-P, ELISA
Reactivity	Human

Package
100 µl

APPLICATION

Application Note

*Optimal dilutions/concentrations should be determined by the researcher.

Suggested dilution	Recommended dilution
WB	1/500 - 1/2000
IHC-P	1/200 - 1/1000
ELISA	1/10000

Not tested in other applications.

Calculated MW 42 kDa. ([Note](#))

PROPERTIES

Form	Liquid
Buffer	Ascites
Preservative	0.03% Sodium azide
Storage	Store as concentrated solution. Centrifuge briefly prior to opening vial. For short-term storage (1-2 weeks), store at 4°C. For long-term storage, aliquot and store at -20°C or below. Avoid multiple freeze-thaw cycles.
Immunogen	Purified recombinant fragment of WNT5A expressed in E. Coli.
Purification	Unpurified
Conjugation	Unconjugated

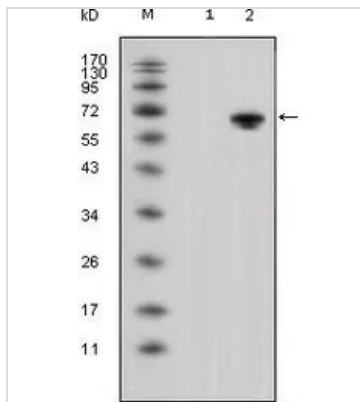
Note

For laboratory research use only. Not for any clinical, therapeutic, or diagnostic use in humans or animals. Not for animal or human consumption.

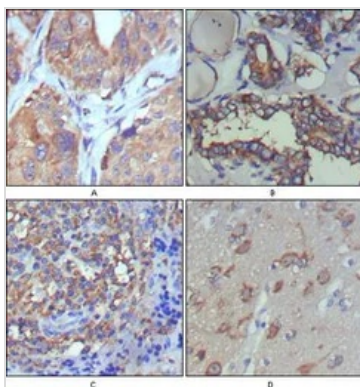
Purchasers shall not, and agree not to enable third parties to, analyze, copy, reverse engineer or otherwise attempt to determine the structure or sequence of the product.



For full product information, images and publications, please visit our [website](#).

DATA IMAGES

GTX83266 WB Image

WB analysis of HEK293 (1) and WNT5A-hlgGfc transfected HEK293 cell lysate (2) using GTX83266 WNT5A antibody [3D10].


GTX83266 IHC-P Image

IHC-P analysis of human lung cancer (A), thyroid cancer (B), lymph node (C) and brain (D) using GTX83266 WNT5A antibody [3D10].



For full product information, images and publications, please visit our [website](https://www.genetex.com).