

CD3 epsilon antibody [4E2]

Cat. No. GTX83278

Host	Mouse
Clonality	Monoclonal
Isotype	IgG1
Applications	WB, FCM, ELISA
Reactivity	Human

Package
100 µl

Applications

Application Note

*Optimal dilutions/concentrations should be determined by the researcher.

Suggested dilution	Recommended dilution
WB	1/500 - 1/2000
FCM	1/200 - 1/400
ELISA	1/10000

Not tested in other applications.

Calculated MW 23 kDa. ([Note](#))

Properties

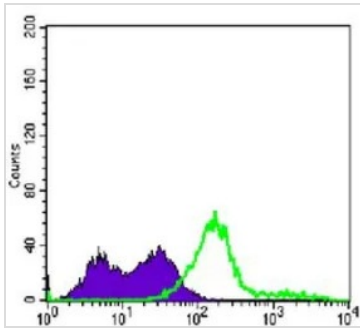
Form	Liquid
Buffer	Ascites
Preservative	0.03% Sodium azide
Storage	Store as concentrated solution. Centrifuge briefly prior to opening vial. For short-term storage (1-2 weeks), store at 4°C. For long-term storage, aliquot and store at -20°C or below. Avoid multiple freeze-thaw cycles.
Immunogen	Purified recombinant fragment of CD3E expressed in E. Coli.
Purification	Unpurified
Conjugation	Unconjugated

Note For laboratory research use only. Not for any clinical, therapeutic, or diagnostic use in humans or animals. Not for animal or human consumption.

Purchasers shall not, and agree not to enable third parties to, analyze, copy, reverse engineer or otherwise attempt to determine the structure or sequence of the product.



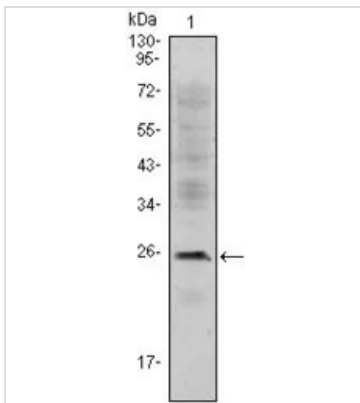
For full product information, images and publications, please visit our [website](#).

DATA IMAGES

GTX83278 FCM Image

FACS analysis of Jurkat cells using GTX83278 CD3 epsilon antibody [4E2].

Green : CD3 epsilon

Purple : negative control


GTX83278 WB Image

WB analysis of Jurkat cell lysate using GTX83278 CD3 epsilon antibody [4E2].



For full product information, images and publications, please visit our [website](#).