

CD19 antibody [2E2]

Cat. No. GTX83282

Host	Mouse
Clonality	Monoclonal
Isotype	IgG2b
Applications	ICC/IF, FCM, ELISA
Reactivity	Human

References (1)

Package

100 µl

Applications

Application Note

*Optimal dilutions/concentrations should be determined by the researcher.

Suggested dilution	Recommended dilution
ICC/IF	1/200 - 1/1000
FCM	1/200 - 1/400
ELISA	1/10000

Not tested in other applications.

Properties

Form	Liquid
Buffer	Ascites
Preservative	0.03% Sodium azide
Storage	Store as concentrated solution. Centrifuge briefly prior to opening vial. For short-term storage (1-2 weeks), store at 4°C. For long-term storage, aliquot and store at -20°C or below. Avoid multiple freeze-thaw cycles.
Immunogen	Purified recombinant fragment of human CD19 expressed in E. Coli.
Purification	Unpurified
Conjugation	Unconjugated

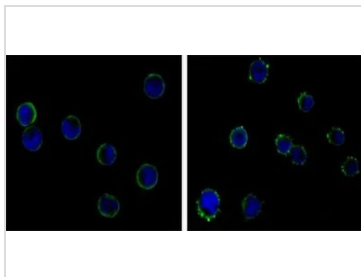
Note

For laboratory research use only. Not for any clinical, therapeutic, or diagnostic use in humans or animals. Not for animal or human consumption.

Purchasers shall not, and agree not to enable third parties to, analyze, copy, reverse engineer or otherwise attempt to determine the structure or sequence of the product.



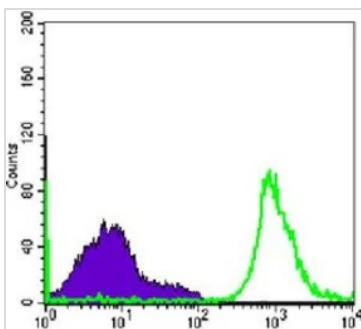
For full product information, images and publications, please visit our [website](#).

DATA IMAGES

GTX83282 ICC/IF Image

ICC/IF analysis of HL-60(left) and K562 (right) cells using GTX83282 CD19 antibody [2E2].

Green : CD19

Blue: DRAQ5 fluorescent DNA dye


GTX83282 FCM Image

FACS analysis of Raji cells using GTX83282 CD19 antibody [2E2].

Green : CD19

Purple : negative control



For full product information, images and publications, please visit our [website](#).