

Nkx3.1 antibody [4H4]

Cat. No. GTX83288

Host	Mouse
Clonality	Monoclonal
Isotype	IgG2b
Applications	WB, IHC-P, FCM, ELISA
Reactivity	Human

Package
100 µl

Applications

Application Note

*Optimal dilutions/concentrations should be determined by the researcher.

Suggested dilution	Recommended dilution
WB	1/500 - 1/2000
IHC-P	1/200 - 1/1000
FCM	1/200 - 1/400
ELISA	1/10000

Not tested in other applications.

Calculated MW 26 kDa. ([Note](#))

Properties

Form	Liquid
Buffer	Ascites
Preservative	0.03% Sodium azide
Storage	Store as concentrated solution. Centrifuge briefly prior to opening vial. For short-term storage (1-2 weeks), store at 4°C. For long-term storage, aliquot and store at -20°C or below. Avoid multiple freeze-thaw cycles.
Immunogen	Purified recombinant fragment of human Nkx3.1 expressed in E. Coli.
Purification	Unpurified
Conjugation	Unconjugated

Note

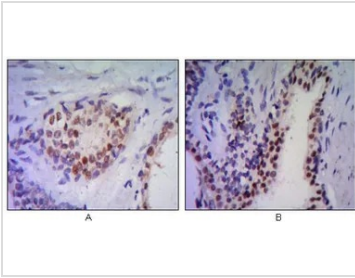
For laboratory research use only. Not for any clinical, therapeutic, or diagnostic use in humans or animals. Not for animal or human consumption.

Purchasers shall not, and agree not to enable third parties to, analyze, copy, reverse engineer or otherwise attempt to determine the structure or sequence of the product.



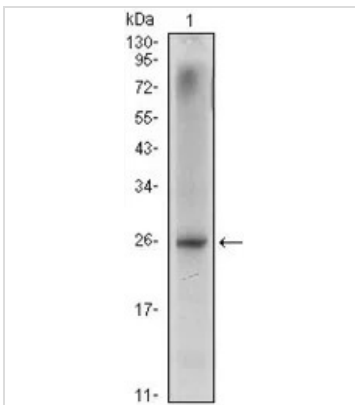
For full product information, images and publications, please visit our [website](#).

DATA IMAGES



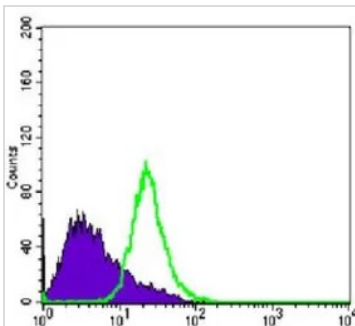
GTX83288 IHC-P Image

IHC-P analysis of human prostate tissue (A, B) using GTX83288 Nkx3.1 antibody [4H4].



GTX83288 WB Image

WB analysis of LNCaP (1) cell lysate using GTX83288 Nkx3.1 antibody [4H4].

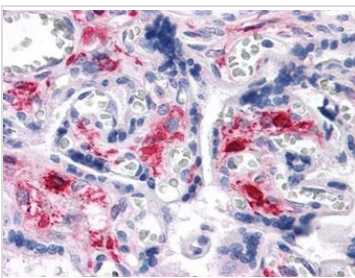


GTX83288 FCM Image

FACS analysis of PC-3 cells using GTX83288 Nkx3.1 antibody [4H4].

Green : Nkx3.1

Purple : negative control



GTX83288 IHC-P Image

IHC-P analysis of human Liver tissue using GTX83288 Nkx3.1 antibody [4H4].



For full product information, images and publications, please visit our [website](https://www.genetex.com).