

PTEN antibody [1B8]

Cat. No. GTX83304

Host	Mouse
Clonality	Monoclonal
Isotype	IgG1
Applications	WB, ICC/IF, IHC-P, FCM, ELISA, PLA
Reactivity	Human, Mouse

References (2)

Package

100 µl

Applications

Application Note

*Optimal dilutions/concentrations should be determined by the researcher.

Suggested dilution	Recommended dilution
WB	1/500 - 1/2000
ICC/IF	1/200 - 1/1000
IHC-P	Assay dependent
FCM	1/200 - 1/400
ELISA	1/10000
PLA	Assay dependent

Not tested in other applications.

Calculated MW 47 kDa. ([Note](#))

Properties

Form	Liquid
Buffer	Ascites
Preservative	0.03% Sodium azide
Storage	Store as concentrated solution. Centrifuge briefly prior to opening vial. For short-term storage (1-2 weeks), store at 4°C. For long-term storage, aliquot and store at -20°C or below. Avoid multiple freeze-thaw cycles.
Immunogen	Purified recombinant fragment of PTEN expressed in E. Coli.
Purification	Unpurified
Conjugation	Unconjugated

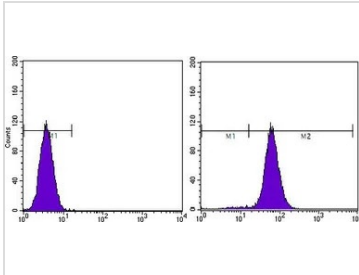


For full product information, images and publications, please visit our [website](#).

For laboratory research use only. Not for any clinical, therapeutic, or diagnostic use in humans or animals. Not for animal or human consumption.

Note

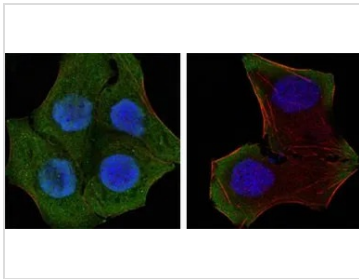
Purchasers shall not, and agree not to enable third parties to, analyze, copy, reverse engineer or otherwise attempt to determine the structure or sequence of the product.

DATA IMAGES

GTX83304 FCM Image

FACS analysis of HeLa cells using GTX83304 PTEN antibody [1B8].

Right : PTEN

Left : negative control

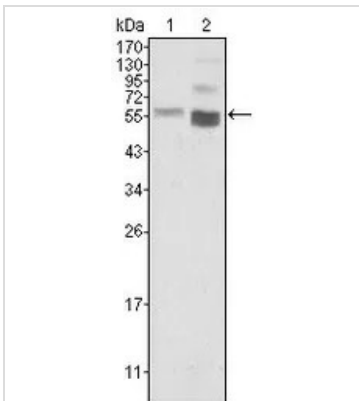

GTX83304 ICC/IF Image

ICC/IF analysis of HeLa (left) and HepG2 (right) cells using GTX83304 PTEN antibody [1B8].

Green : PTEN

Blue: DRAQ5 fluorescent DNA dye

Red: Actin filaments


GTX83304 WB Image

WB analysis of HeLa (1) and NIH3T3 (2) cell lysate using GTX83304 PTEN antibody [1B8].



For full product information, images and publications, please visit our [website](https://www.genetex.com).