

## EphA1 antibody [5D2]

Cat. No. GTX83346

Host	Mouse
Clonality	Monoclonal
Isotype	IgG1
Applications	WB, IHC-P, ELISA
Reactivity	Human

Package  
100 µl

## Applications

## Application Note

\*Optimal dilutions/concentrations should be determined by the researcher.

Suggested dilution	Recommended dilution
WB	1/500 - 1/2000
IHC-P	1/200 - 1/1000
ELISA	1/10000

Not tested in other applications.

Calculated MW 108 kDa. ([Note](#))

## Properties

Form	Liquid
Buffer	PBS
Preservative	0.03% Sodium azide
Storage	Store as concentrated solution. Centrifuge briefly prior to opening vial. For short-term storage (1-2 weeks), store at 4°C. For long-term storage, aliquot and store at -20°C or below. Avoid multiple freeze-thaw cycles.
Concentration	Batch dependent (Please refer to the vial label for the specific concentration.)
Immunogen	Purified recombinant fragment of EphA1 expressed in E. Coli.
Purification	Protein G Purified
Conjugation	Unconjugated

## Note

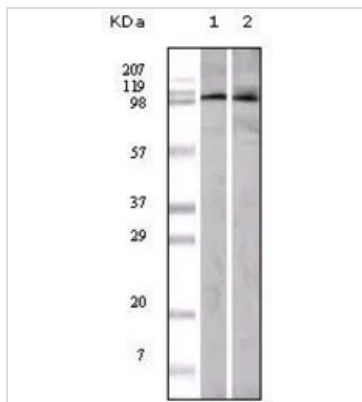
For laboratory research use only. Not for any clinical, therapeutic, or diagnostic use in humans or animals. Not for animal or human consumption.

Purchasers shall not, and agree not to enable third parties to, analyze, copy, reverse engineer or otherwise attempt to determine the structure or sequence of the product.



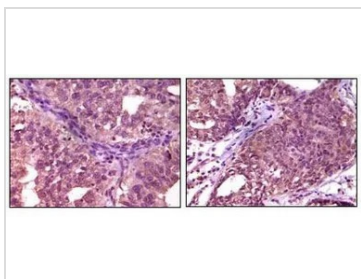
For full product information, images and publications, please visit our [website](#).

## DATA IMAGES



### GTx83346 WB Image

WB analysis of A549 (1) and HeLa (2) cell lysate using GTx83346 EphA1 antibody [5D2].



### GTx83346 IHC-P Image

IHC-P analysis of human ovary carcinoma (left) and breast carcinoma (right) using GTx83346 EphA1 antibody [5D2].



For full product information, images and publications, please visit our [website](https://www.genetex.com).