

## Her3 / ErbB3 antibody [2F9]

**Cat. No. GTX83364**

<b>Host</b>	Mouse
<b>Clonality</b>	Monoclonal
<b>Isotype</b>	IgG1
<b>Applications</b>	WB, ICC/IF, IP, ELISA
<b>Reactivity</b>	Human

References ( 1 )

Package

100 µl

## Applications

**Application Note**

\*Optimal dilutions/concentrations should be determined by the researcher.

Suggested dilution	Recommended dilution
WB	1/500 - 1/2000
ICC/IF	1/200 - 1/1000
IP	Assay dependent
ELISA	1/10000

Not tested in other applications.

**Calculated MW** 148 kDa. ([Note](#))

## Properties

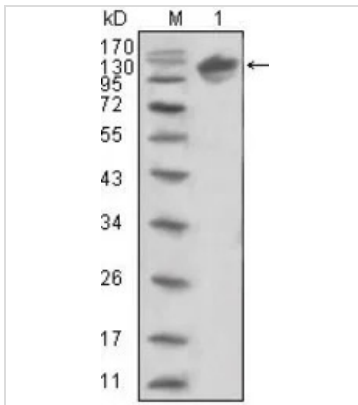
<b>Form</b>	Liquid
<b>Buffer</b>	Ascites
<b>Preservative</b>	0.03% Sodium azide
<b>Storage</b>	Store as concentrated solution. Centrifuge briefly prior to opening vial. For short-term storage (1-2 weeks), store at 4°C. For long-term storage, aliquot and store at -20°C or below. Avoid multiple freeze-thaw cycles.
<b>Immunogen</b>	Purified recombinant extracellular fragment of human ERBB3 (aa22-369) fused with hlgGfc tag expressed in HEK293 cells.
<b>Purification</b>	Unpurified
<b>Conjugation</b>	Unconjugated

**Note**

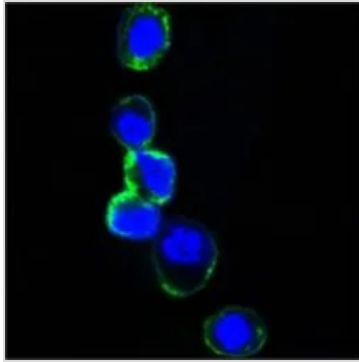
For laboratory research use only. Not for any clinical, therapeutic, or diagnostic use in humans or animals. Not for animal or human consumption.

Purchasers shall not, and agree not to enable third parties to, analyze, copy, reverse engineer or otherwise attempt to determine the structure or sequence of the product.

For full product information, images and publications, please visit our [website](#).

**DATA IMAGES**

**GTx83364 WB Image**

WB analysis of human ERBB3 (aa22-369)-hlgGfc trasfected HEK293 cell lysate using GTx83364 Her3 / ErbB3 antibody [2F9].


**GTx83364 ICC/IF Image**

ICC/IF analysis of HEK293 cells trasfected with extracellular ERBB3 (aa22-369)-hlgGfc using GTx83364 Her3 / ErbB3 antibody [2F9].

Green : Her3 / ErbB3

Blue: DRAQ5 fluorescent DNA dye



For full product information, images and publications, please visit our [website](#).