

PAK2 antibody [3B5]

Cat. No. GTX83373

Host	Mouse
Clonality	Monoclonal
Isotype	IgG1
Application	WB, ICC/IF, IHC-P, ELISA
Reactivity	Human, Monkey

Package
100 µl

APPLICATION

Application Note

*Optimal dilutions/concentrations should be determined by the researcher.

Suggested dilution	Recommended dilution
WB	1/500 - 1/2000
ICC/IF	1/200 - 1/1000
IHC-P	1/200 - 1/1000
ELISA	1/10000

Not tested in other applications.

Calculated MW 58 kDa. ([Note](#))

PROPERTIES

Form	Liquid
Buffer	Ascites
Preservative	0.03% Sodium azide
Storage	Store as concentrated solution. Centrifuge briefly prior to opening vial. For short-term storage (1-2 weeks), store at 4°C. For long-term storage, aliquot and store at -20°C or below. Avoid multiple freeze-thaw cycles.
Immunogen	Purified recombinant fragment of PAK2(AA : 4-223) expressed in E. Coli.
Purification	Unpurified
Conjugation	Unconjugated

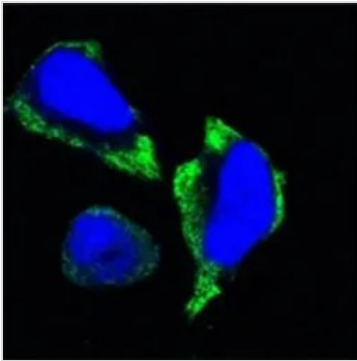
Note

For laboratory research use only. Not for any clinical, therapeutic, or diagnostic use in humans or animals. Not for animal or human consumption.

Purchasers shall not, and agree not to enable third parties to, analyze, copy, reverse engineer or otherwise attempt to determine the structure or sequence of the product.



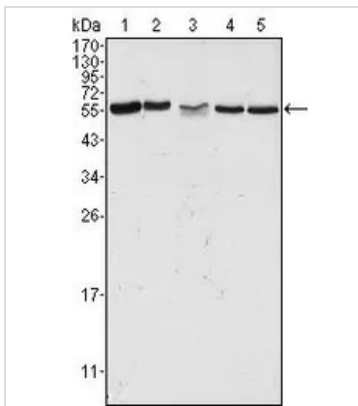
For full product information, images and publications, please visit our [website](#).

DATA IMAGES

GTX83373 ICC/IF Image

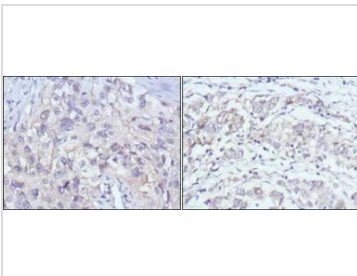
ICC/IF analysis of HeLa cells using GTX83373 PAK2 antibody [3B5].

Green : PAK2

Blue: DRAQ5 fluorescent DNA dye


GTX83373 WB Image

WB analysis of HeLa (1), Jurkat (2), A549 (3), HEK293 (4) and K562 (5) cell lysate using GTX83373 PAK2 antibody [3B5].


GTX83373 IHC-P Image

IHC-P analysis of human lung cancer (left) and gastric cancer (right) using GTX83373 PAK2 antibody [3B5].



For full product information, images and publications, please visit our [website](https://www.genetex.com).