

## Ki67 antibody [4A1]

**Cat. No. GTX83375**

<b>Host</b>	Mouse
<b>Clonality</b>	Monoclonal
<b>Isotype</b>	IgG2b
<b>Applications</b>	IHC-P, ELISA
<b>Reactivity</b>	Human

References ( 1 )

Package

100 µl

## Applications

**Application Note**

\*Optimal dilutions/concentrations should be determined by the researcher.

Suggested dilution	Recommended dilution
IHC-P	1/200 - 1/1000
ELISA	1/10000

Not tested in other applications.

## Properties

<b>Form</b>	Liquid
<b>Buffer</b>	Ascites
<b>Preservative</b>	0.03% Sodium azide
<b>Storage</b>	Store as concentrated solution. Centrifuge briefly prior to opening vial. For short-term storage (1-2 weeks), store at 4°C. For long-term storage, aliquot and store at -20°C or below. Avoid multiple freeze-thaw cycles.
<b>Immunogen</b>	Synthetic peptide corresponding to aa (CEDLAGFKELFQTPG) of human Ki67, conjugated to KLH.
<b>Purification</b>	Unpurified
<b>Conjugation</b>	Unconjugated

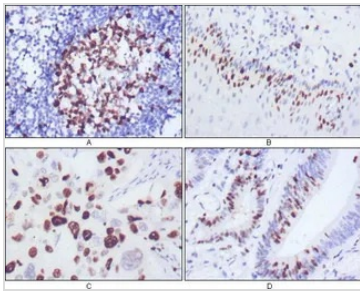
**Note**

For laboratory research use only. Not for any clinical, therapeutic, or diagnostic use in humans or animals. Not for animal or human consumption.

Purchasers shall not, and agree not to enable third parties to, analyze, copy, reverse engineer or otherwise attempt to determine the structure or sequence of the product.

For full product information, images and publications, please visit our [website](#).

## DATA IMAGES

**GTX83375 IHC-P Image**

IHC-P analysis of human lymph node (A), esophagus (B), lung cancer (C), rectum cancer (D) using GTX83375 Ki67 antibody [4A1].



For full product information, images and publications, please visit our [website](#).