

KSHV ORF8 antibody

Cat. No. GTX83381

Host	Rabbit
Clonality	Polyclonal
Isotype	IgG
Applications	WB, ELISA
Reactivity	Kaposi's sarcoma-associated herpesvirus

References (2)

Package

100 µl

Applications

Application Note

*Optimal dilutions/concentrations should be determined by the researcher.

Suggested dilution	Recommended dilution
WB	1/500 - 1/2000
ELISA	1/10000

Not tested in other applications.

Calculated MW 94 kDa. ([Note](#))

Properties

Form	Liquid
Buffer	Serum
Preservative	No preservative
Storage	Store as concentrated solution. Centrifuge briefly prior to opening vial. For short-term storage (1-2 weeks), store at 4°C. For long-term storage, aliquot and store at -20°C or below. Avoid multiple freeze-thaw cycles.
Immunogen	Synthetic peptide, corresponding to amino acids sequence of KSHV ORF8.
Purification	Unpurified
Conjugation	Unconjugated

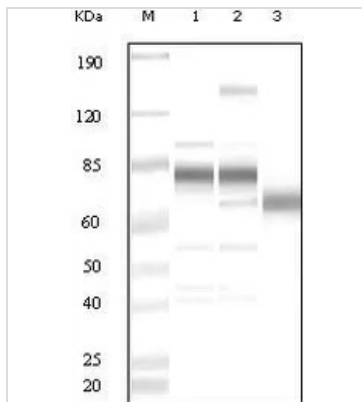
Note

For laboratory research use only. Not for any clinical, therapeutic, or diagnostic use in humans or animals. Not for animal or human consumption.

Purchasers shall not, and agree not to enable third parties to, analyze, copy, reverse engineer or otherwise attempt to determine the structure or sequence of the product.



For full product information, images and publications, please visit our [website](#).

DATA IMAGES

GTX83381 WB Image

WB analysis of uninduced BCBL1 cell lysate (1), TPA induced BCBL1 cell lysate(2) and purified virion (3) using GTX83381 KSHV ORF8 antibody.



For full product information, images and publications, please visit our [website](https://www.genetex.com).