

ZIM2 antibody [7G1]

Cat. No. GTX83402

Host	Mouse
Clonality	Monoclonal
Isotype	IgG1
Applications	WB, ICC/IF, IHC-P, FCM
Reactivity	Human

Package
100 µl

Applications

Application Note

*Optimal dilutions/concentrations should be determined by the researcher.

Suggested dilution	Recommended dilution
WB	1:2000
ICC/IF	1:100
IHC-P	1:150
FCM	1:100

Not tested in other applications.

Calculated MW 61 kDa. ([Note](#))

Properties

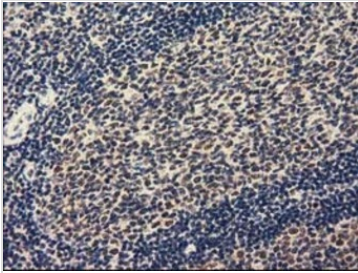
Form	Liquid
Buffer	PBS, 1% BSA, 50% Glycerol
Preservative	0.02% Sodium azide
Storage	Store as concentrated solution. Centrifuge briefly prior to opening vial. For short-term storage (1-2 weeks), store at 4°C. For long-term storage, aliquot and store at -20°C or below. Avoid multiple freeze-thaw cycles.
Concentration	1 mg/ml (Please refer to the vial label for the specific concentration.)
Immunogen	Human recombinant protein fragment corresponding to amino acids 1-150 and 428-527 of human ZIM2 (NP_056178) produced in E.coli.
Purification	Purified by affinity chromatography From tissue culture supernatant
Conjugation	Unconjugated

For full product information, images and publications, please visit our [website](#).

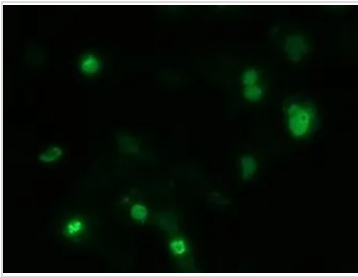
For laboratory research use only. Not for any clinical, therapeutic, or diagnostic use in humans or animals. Not for animal or human consumption.

Note

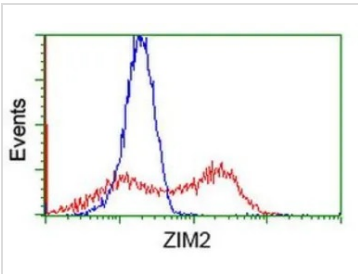
Purchasers shall not, and agree not to enable third parties to, analyze, copy, reverse engineer or otherwise attempt to determine the structure or sequence of the product.

DATA IMAGES

GTX83402 IHC-P Image

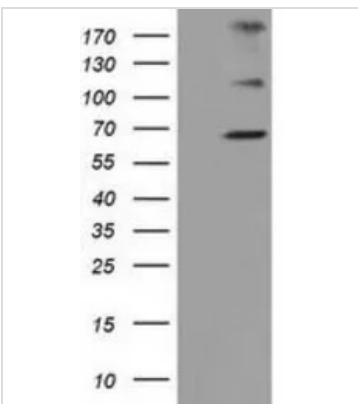
IHC-P analysis of human lymph node tissue using GTX83402 ZIM2 antibody [7G1].


GTX83402 ICC/IF Image

ICC/IF analysis of COS7 cells transiently transfected with ZIM2 plasmid using GTX83402 ZIM2 antibody [7G1].


GTX83402 FCM Image

FACS analysis of HEK293T cells transfected with either ZIM2 plasmid (Red) or empty vector control plasmid (Blue) using GTX83402 ZIM2 antibody [7G1].


GTX83402 WB Image

WB analysis of HEK293T cells transfected with ZIM2 plasmid (Right) or empty vector (Left) for 48 hrs using GTX83402 ZIM2 antibody [7G1].

Loading : 5 ug per lane



For full product information, images and publications, please visit our [website](https://www.genetex.com).