

XPNPEP1 antibody [1E3]

Cat. No. GTX83414

Host	Mouse
Clonality	Monoclonal
Isotype	IgG1
Applications	WB, ICC/IF, IHC-P
Reactivity	Human, Monkey

Package
100 µl

Applications

Application Note

*Optimal dilutions/concentrations should be determined by the researcher.

Suggested dilution	Recommended dilution
WB	1:2000
ICC/IF	1:100
IHC-P	1:150

Not tested in other applications.

Calculated MW 70 kDa. ([Note](#))

Properties

Form	Liquid
Buffer	PBS, 1% BSA, 50% Glycerol
Preservative	0.02% Sodium azide
Storage	Store as concentrated solution. Centrifuge briefly prior to opening vial. For short-term storage (1-2 weeks), store at 4°C. For long-term storage, aliquot and store at -20°C or below. Avoid multiple freeze-thaw cycles.
Concentration	1 mg/ml (Please refer to the vial label for the specific concentration.)
Immunogen	Full length human recombinant protein of human XPNPEP1 (NP_065116) produced in HEK293T cell.
Purification	Purified by affinity chromatography From tissue culture supernatant
Conjugation	Unconjugated

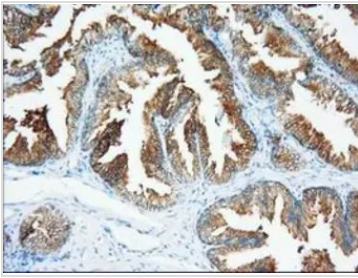
Note

For laboratory research use only. Not for any clinical, therapeutic, or diagnostic use in humans or animals. Not for animal or human consumption.

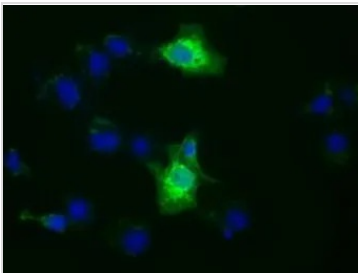
Purchasers shall not, and agree not to enable third parties to, analyze, copy, reverse engineer or otherwise attempt to determine the structure or sequence of the product.



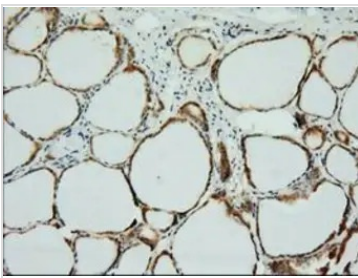
For full product information, images and publications, please visit our [website](#).

DATA IMAGES

GTX83414 IHC-P Image

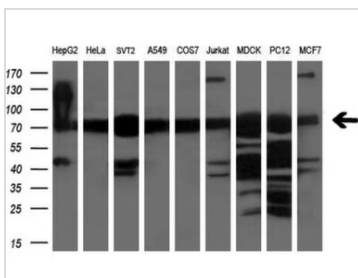
IHC-P analysis of human prostate tissue using GTX83414 XPNPEP1 antibody [1E3].
 Antigen retrieval : Heat-induced epitope retrieval by 10mM citrate buffer, pH6.0, 100°C for 10min.
 Dilution : 1:50


GTX83414 ICC/IF Image

ICC/IF analysis of COS7 cells transiently transfected with XPNPEP1 plasmid using GTX83414 XPNPEP1 antibody [1E3].


GTX83414 IHC-P Image

IHC-P analysis of human thyroid tissue using GTX83414 XPNPEP1 antibody [1E3].
 Antigen retrieval : Heat-induced epitope retrieval by 10mM citrate buffer, pH6.0, 100°C for 10min.
 Dilution : 1:50


GTX83414 WB Image

WB analysis of various cell lines using GTX83414 XPNPEP1 antibody [1E3].
 Loading : 35 ug per lane
 Dilution : 1:200



For full product information, images and publications, please visit our [website](https://www.genetex.com).