

USP5 antibody [2F5]

Cat. No. GTX83431

Host	Mouse
Clonality	Monoclonal
Isotype	IgG1
Applications	WB, ICC/IF, IHC-P
Reactivity	Human, Mouse, Rat, Dog, Monkey

Package
100 µl

Applications

Application Note

*Optimal dilutions/concentrations should be determined by the researcher.

Suggested dilution	Recommended dilution
WB	1:1000-1:2000
ICC/IF	1:100
IHC-P	1:50

Not tested in other applications.

Calculated MW 96 kDa. ([Note](#))

Properties

Form	Liquid
Buffer	PBS, 1% BSA, 50% Glycerol
Preservative	0.02% Sodium azide
Storage	Store as concentrated solution. Centrifuge briefly prior to opening vial. For short-term storage (1-2 weeks), store at 4°C. For long-term storage, aliquot and store at -20°C or below. Avoid multiple freeze-thaw cycles.
Concentration	1 mg/ml (Please refer to the vial label for the specific concentration.)
Immunogen	Full length human recombinant protein of human USP5(NP_003472) produced in HEK293T cell.
Purification	Purified by affinity chromatography From tissue culture supernatant
Conjugation	Unconjugated

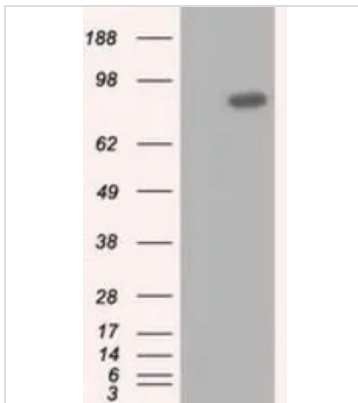
Note

For laboratory research use only. Not for any clinical, therapeutic, or diagnostic use in humans or animals. Not for animal or human consumption.

Purchasers shall not, and agree not to enable third parties to, analyze, copy, reverse engineer or otherwise attempt to determine the structure or sequence of the product.

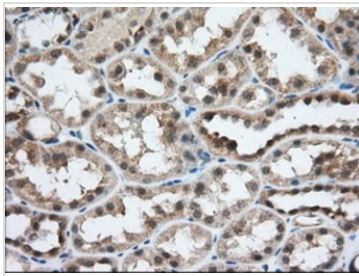


For full product information, images and publications, please visit our [website](#).

DATA IMAGES

GTX83431 WB Image

WB analysis of HEK293T cells transfected with USP5 plasmid (Right) or empty vector (Left) for 48 hrs using GTX83431 USP5 antibody [2F5].

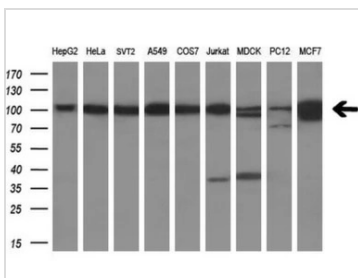
Loading : 5 ug per lane


GTX83431 IHC-P Image

IHC-P analysis of human kidney tissue using GTX83431 USP5 antibody [2F5].

Antigen retrieval : Heat-induced epitope retrieval by 10mM citrate buffer, pH6.0, 100°C for 10min.

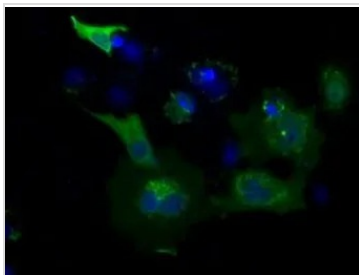
Dilution : 1:50


GTX83431 WB Image

WB analysis of various cell lines using GTX83431 USP5 antibody [2F5].

Loading : 35 ug per lane

Dilution : 1:200


GTX83431 ICC/IF Image

ICC/IF analysis of COS7 cells transiently transfected with USP5 plasmid using GTX83431 USP5 antibody [2F5].



For full product information, images and publications, please visit our [website](https://www.genetex.com).