

## USP38 antibody [1D11]

Cat. No. GTX83434

Host	Mouse
Clonality	Monoclonal
Isotype	IgM
Applications	WB
Reactivity	Human, Dog

Package  
100 µl

## Applications

## Application Note

\*Optimal dilutions/concentrations should be determined by the researcher.

Suggested dilution	Recommended dilution
WB	1:2000

Not tested in other applications.

Calculated MW 117 kDa. ( [Note](#) )

## Properties

Form	Liquid
Buffer	PBS, 1% BSA, 50% Glycerol
Preservative	0.02% Sodium azide
Storage	Store as concentrated solution. Centrifuge briefly prior to opening vial. For short-term storage (1-2 weeks), store at 4°C. For long-term storage, aliquot and store at -20°C or below. Avoid multiple freeze-thaw cycles.
Concentration	1 mg/ml (Please refer to the vial label for the specific concentration.)
Immunogen	Full length human recombinant protein of human USP38 (NP_115946) produced in HEK293T cell.
Purification	Purified by affinity chromatography From tissue culture supernatant
Conjugation	Unconjugated

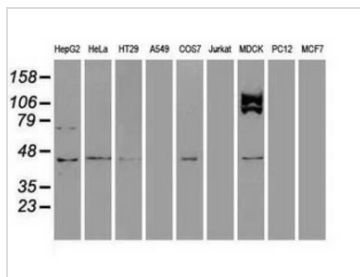
## Note

For laboratory research use only. Not for any clinical, therapeutic, or diagnostic use in humans or animals. Not for animal or human consumption.

Purchasers shall not, and agree not to enable third parties to, analyze, copy, reverse engineer or otherwise attempt to determine the structure or sequence of the product.

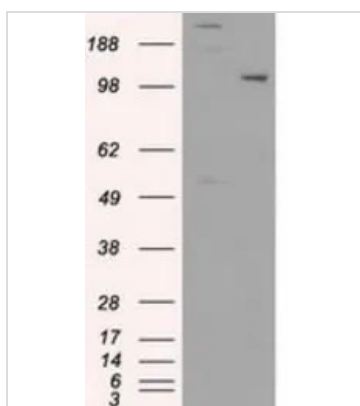


For full product information, images and publications, please visit our [website](#).

**DATA IMAGES**

**GTX83434 WB Image**

WB analysis of various cell lines using GTX83434 USP38 antibody [1D11].

Loading : 35 ug per lane


**GTX83434 WB Image**

WB analysis of HEK293T cells transfected with USP38 plasmid (Right) or empty vector (Left) for 48 hrs using GTX83434 USP38 antibody [1D11].

Loading : 5 ug per lane



For full product information, images and publications, please visit our [website](https://www.genetex.com).